



Healthcare Focus

WebRTC Integration with HIMS

Tim Panton
Westhawk






Speakers

- Arnaud Budkiewicz
 - Bistri
- Dick Govatski
 - Net Medical
- Peter Killcommons
 - Medweb



Introduction to Bistri

Arnaud Budkiewicz 
Co-founder, President
Bistri, Inc.



Bistri Video Communication SDK



Bistri ToolBox

- Wordpress plugins
- Javascript API
- Android / Glass SDK
- iOS SDK (Q3)



**Connected to
Bis.io's Scalable Platform**



Bistri SDK for Healthcare

Doctors today spend more than **THIRD of their DAY** on the computer, documenting on the Electronic Health Record

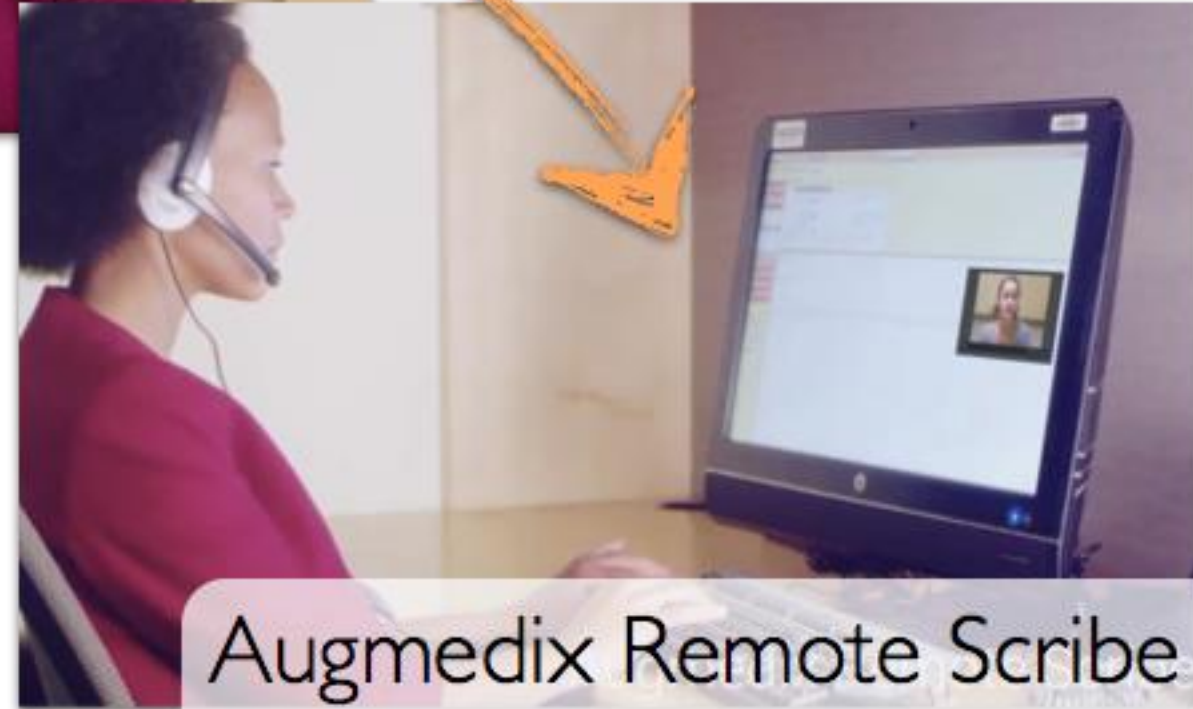
Augmedix allows doctors to reclaim that time and energy, so they focus on what matters most

CARING FOR PATIENTS





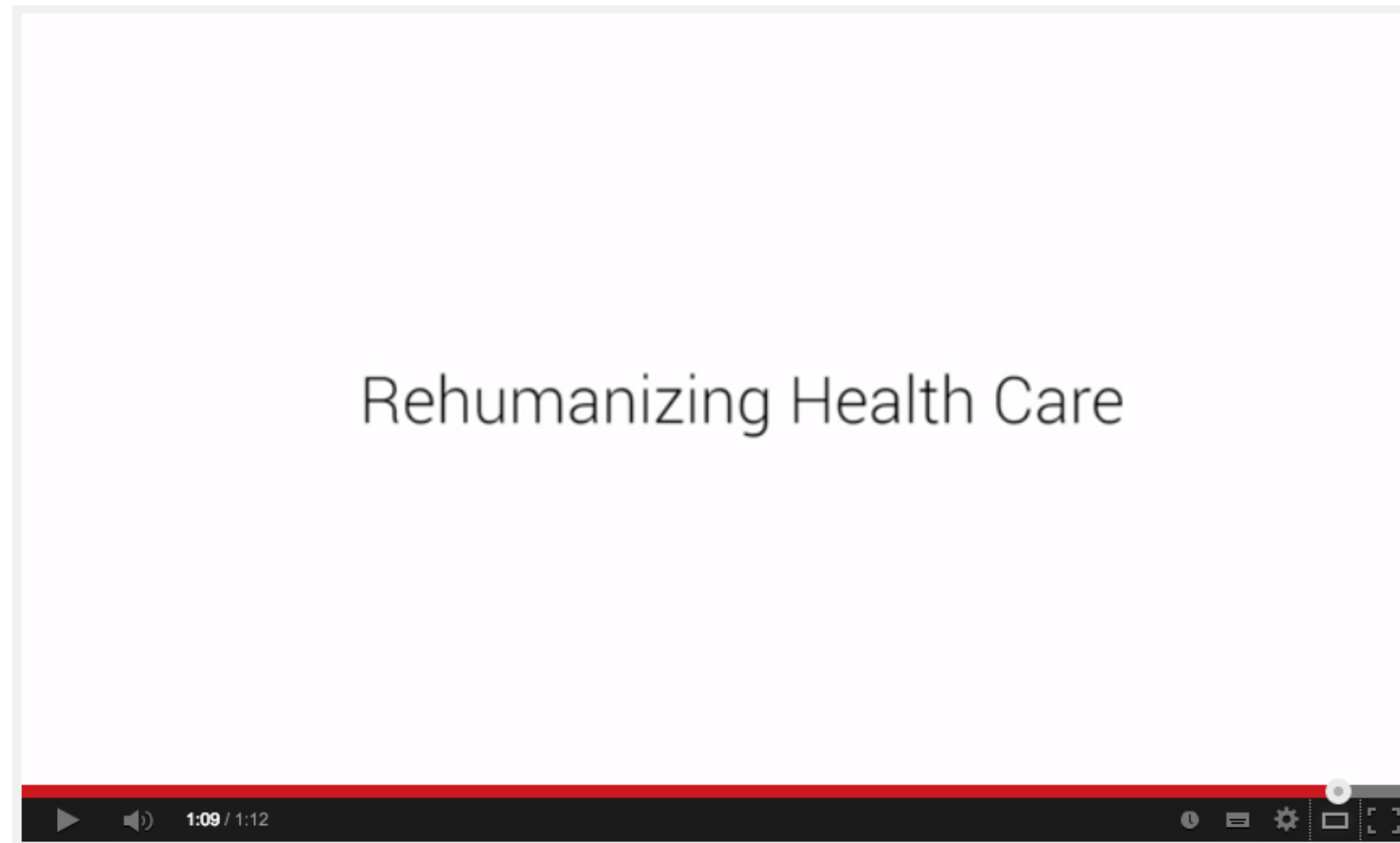
GLASS



Augmedix Remote Scribe

 AUGMEDIX

powered by  **bistri**



<https://www.youtube.com/watch?v=gevMHo5xL2g>



NET MEDICAL WebRTC Switch

Dick Govatski

Net Medical



Telemedicine Managed Services

Infrastructure Group – Software Development

Networking

Technology Deployment

Research & Development

Diagnostics Division

Home Health

Staff Recruiting

Specialist Division

Hospitals

Mobile Companies

Video Conferencing

Accenture

Neurologists

Specialty Hospitals

Primary Care Doctors

Insurance Companies

Physicians

Cardiologists

Urgent Cares

E-Prescription

Primary Care Providers

Broadband

Psychiatrists

Teleradiology

Home Telemedicine

Home Health

Project Planning

Pulmonologists

Telecardiology

Placements

HIPAA Audits

Critical Care

Intensivists

– QSR – FDA Team – HIPAA Group – Medical Standards

Call Center

Credentialing

Investor Relations

Purchasing

Accounting

IT Support

IT Support

Installation Group

Training

Sales





How IT Fits Together

Net Medical

Technology

- Integration – PACS
- XR-Express
- Custom Reports
- WebRTC Switch
- T-Scheduler (Docs)
- Encryption
- Security
- Net Med Connect
- Smart Devices

Personnel

- Your Doctors
- Our Doctors
- Combinations
- Multiple Modalities
- Credentialing
- FCVS

Regulatory

- FDA 510k Cleared
- CFR 21- 820
- OCR- HIPAA
- Security
- Privacy
- Clearances
- Audit Responsibility

Operations

- Call Center Staffing
- Hospital Routing
- Monthly Reporting
- Tech Support
- IT Support
- Operations Support
- New Services



Net Medical Workflow



Calls NIMXS To Start Case

Order for 7 Years by NIMXS



Contacts Specialist



Order arrives within 5 minutes to Facility

Specialist logs in to view & speak with Patient



Images received by Fax/ DI/HL7

Image Files Reviewed



Physician & Specialist Concur on Patient Plan



WebRTC – How Does It Work in Medical



https://www.nmxsvideo.com/multi/switchboard.php

Net Medical Xpress Solutions

Welcome Demo5

Demo Group Group for RTC Switch

Status	Users	From Sub Group	
	Demo1	Demo Sub Group	
	Demo6	Demo Sub Group	
	Demo4	Demo Sub Group	
	Demo3	Demo Sub Group	
	Demo2	Demo Sub Group	
	Demo7	Demo Sub Group	

https://www.nmxsvideo.com/multi/multi.php?multid=3a8bc987-dd79-b209-3229-922dec09172a&usid=69385603-451c-958c-883c-48951ab49846&gpId=Demo%20Group

Microphone is Enabled-Turn off to cancel any echoing

ON

XR-Express PACS

Login by Password

Email Address:

Password:

Login

Who's Online

Demo5: undefined

Send

All – In – One Telemedicine Technology Two Components

- 1) Cart
- 2) Large Screen Tablet
- 3) with WebRTC installed



Medical Devices –
Stethoscope
Eye Scope
Otoscope
Dermatoscope
Endoscope



Medweb IHE and WebRTC

- Integrating WebRTC into the Medical enterprise
- Linking multiple facilities and doctors
- Connecting with EMR, PHR, and PACS

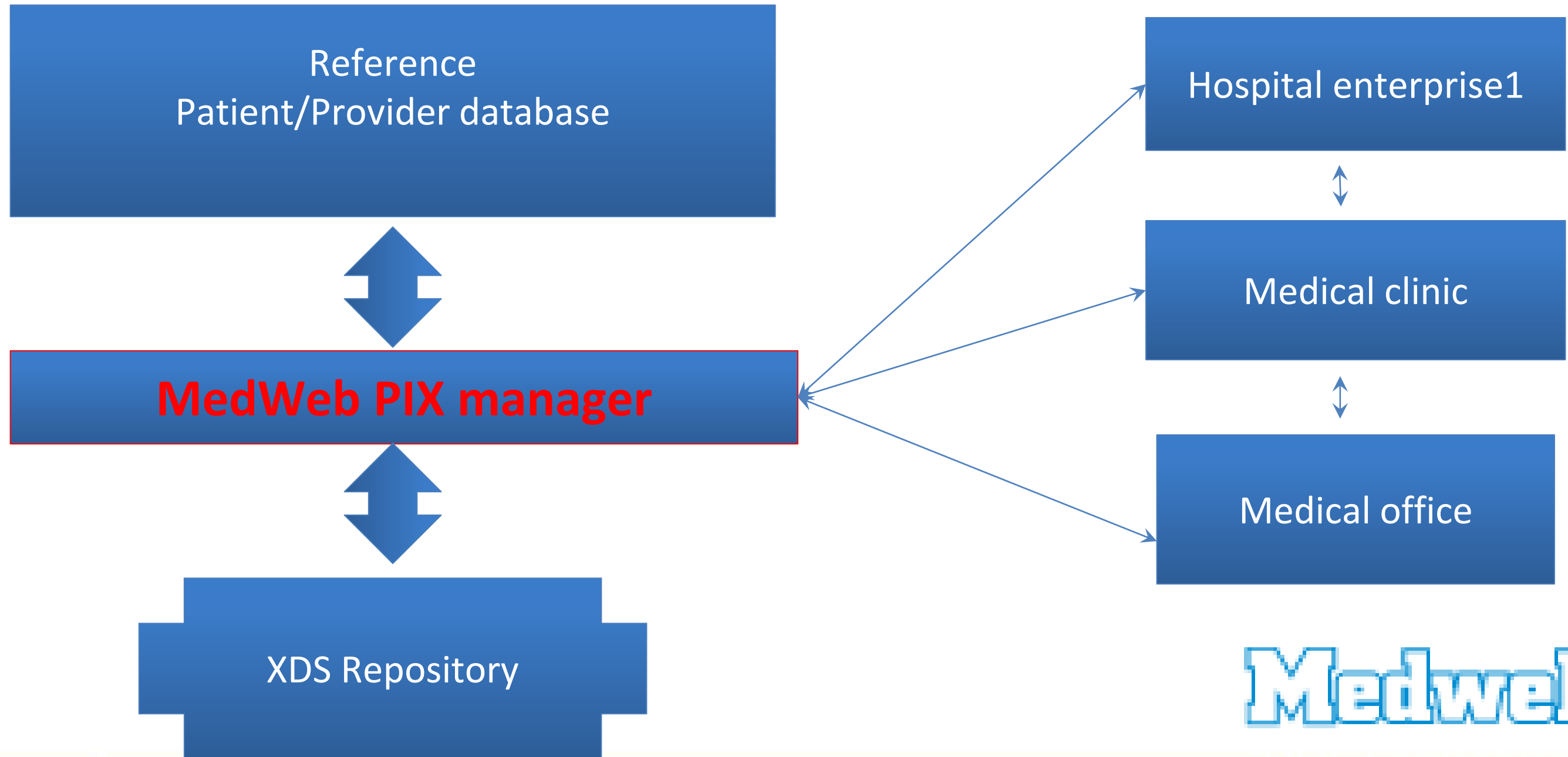
Pete Killcommons MD

CEO, Medweb

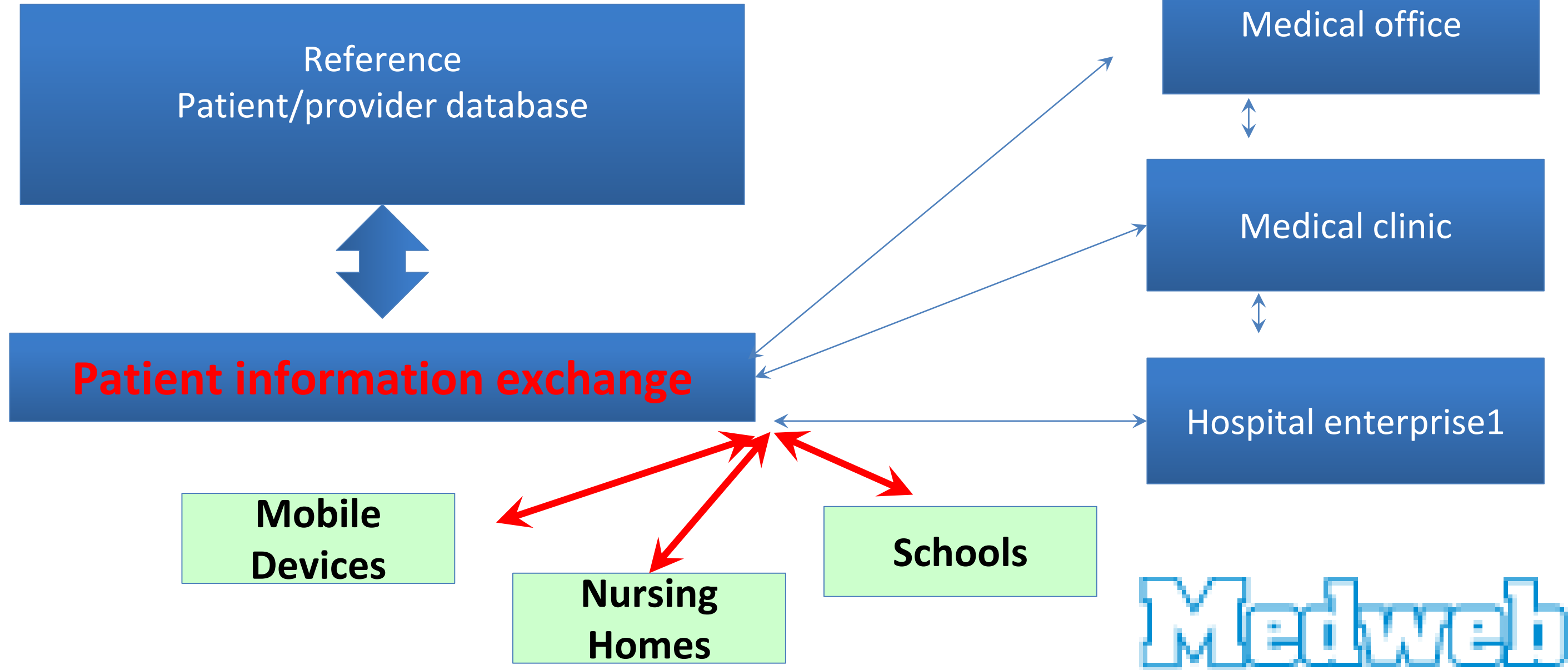
www.medweb.com



IHE XDS Architecture



IHE Expansion to Para EMR



...rules of engagement, architecture for interfaces & Standards for data transfer in a PHC Ecosystem

Continua Interfaces & Standards Architecture

Personal Device

- Thermometer 
- Pulse Oximeter 
- Pulse / Blood Pressure 
- Weight Scale 
- Glucose Meter 
- Cardio / Strength 
- Independent Living Activity 
- Peak Flow 
- Adherence Monitor 
- Physical Activity 
- Insulin Pump 

-  **ISO**
-  **IEEE**
-  **ZigBee™**
Local Area Network (LAN) Interface
-  **Bluetooth™**
-  **USB**
Personal Area Network (PAN) Interface

Aggregation Manager



Telehealth Service Center



Health Records



 
W3C
↑
Wide Area Network (WAN) Interface



↑
Health Record Network (HRN) Interface

Medweb E-Visit, Collage

- WebRTC for Live consultation
 - linked to medical devices.
 - linked to Electronic medical record.
 - linked to Personal Health Record.

Medweb

Medweb Collage



The screenshot shows the Medweb Collage application interface. The main window is titled "Start Page - Medweb Collage, Version 3.0.6.104 - admin". It features a central "Start Page" with eight medical icons: Vitals, Ultrasound, Multiscope, Share Viewer, Stethoscope, EKG, Pulse Ox, and Glidescope. On the left, there is a "Conference" window with a video feed of a man in blue scrubs, a "Participants" list including Dr. Jones, Michelle Brook, Dr. Davis, Dr. Torres, Amy Wilson, and David Richards, and a "Share" button. On the right, there is an "EMR Gateway" window with a "Patient" form containing fields for Last Name, First Name, Sex (Male/Female), DOB (1/1/1984), Patient ID, SSN, Referring, and Consulting. At the bottom, a "Vitals" window displays a table of vital signs.

T1:	T2:	PR:	SPO:	Str:	Sys:	Dia:	Mean:	Cuff:
-	-	-	-	-	-	-	-	-



Thank You

Please remember to complete an evaluation of today's sessions



Questions (hidden)

Regulation as a medical device?

User benefits?

Privacy?

Bandwidth issues?

Comparison with other platforms (eg skype)?

Video how much value?

Data Channel?