



The Industry's
17th Event
Since 2009

FEBRUARY 7-10, 2017
Greater Ft. Lauderdale/
Broward County Convention Center
Fort Lauderdale, Florida
www.IoTEvolutionExpo.com

Seven Conference Tracks



Plus the All New
Industrial IoT Conference



Show Guide

Super Sponsor



Diamond Sponsors



Platinum Sponsor



Gold Sponsors





ACCELERATE TIME TO MARKET

MAKE MONEY. SAVE MONEY.

TELIT ENABLES END-TO-END **IoT SOLUTIONS**

IoT PLATFORMS. IoT MODULES. IoT CONNECTIVITY. IoT KNOW-HOW.
Any market. Any Industry. Anywhere.

FIND OUT HOW

Stop by booth #1217 in the Telit IoT Innovation pavilion to learn how Telit can help you transform IoT concepts into measurable business outcomes.

www.telit.com

Telit

Super Sponsor



Telit

Diamond Sponsors



Platinum Sponsors



Gold Sponsors



Corporate Sponsors



Track Sponsor



Analyst Partners



Association Sponsor



Media Sponsors



Tuesday, February 7th

Showcase: 4:00PM in Grand A/B | Reception: 6:00pm in Telit Pavilion, Expo Hall, Hall B

Telit Best Practices Showcase



Building and creating an IoT prototype solution is easy but moving beyond the prototype to a real world scalable deployment requires a careful, well considered vision for execution. Replacing the Battle of the Platforms, Telit's Best Practices Showcase features real life success stories from SAP, Yokogawa and other leading brands about the practices they employ that offer value, operational efficiency and profitability. This event is open to all Telit IoT Innovation and IoT Evolution Expo attendees.

- Chandra Venkatapathy, Sr. Product Manager, IoT Fog Computing, Cisco
- Andrew LeBlanc, Chief Support Architect, IoT & Big Data Analytic, SAP
- Karthikeyan Natarajan, Global Head - Engineering, IOT and Enterprise Mobility, Tech Mahindra
- Mits Sagae, Head of Architecture Development Department California, Business Development Center, Marketing HQ, Yokogawa



Case Study Theatre

Wednesday, February 8th - Friday, February 10th

Expo Hall Theatre, Hall B

IoT Evolution Theatre

- IoT in the Channel
- IoT of the Americas
- Business Impact Award Winners
- IoT Startup Presentations
- Security Summit



Thursday, February 9th | 12:45pm | Expo Hall Theatre, Hall B

Business Impact Awards

Get insight into developing and implementing your IoT business plan from companies and business leaders who have already achieved IoT success. Hear how these companies have implemented M2M and IoT solutions to solve a business issue, launch a new service or create a revenue opportunity.

Winners & Presenters Include:

- Luc Duchesne, WeedMD
- Michael Kadonof, BrainGrid
- Lina Mubarak, Scriptr.io
- Adrian Newcombe, Trimble
- Patricia Watkins, Sprint
- Will Yapp, Senet
- BioTelemetry
- Samsung

Table of Contents

Keynote Speakers.....	5	Connected Transport/Connected Industry	20
Agenda-At-A-Glance	6-9	IoT Enterprise Operations.....	22
General Sessions/IoT Security Summit	12	Industrial IoT	24
IoT Certification Course/deviceWISE Workshop.....	14	IoT Developers	26
IoT IT - BI and Machine Learning/Open Fog Workshop	16	CEO Summit.....	28
Connected Building and Cities.....	18	Exhibitor Descriptions	30-35

Keynote Speakers - Grand A/B | 3rd Floor



12:15PM | Wednesday, Feb 8

Lisa Peterson
VP of Marketing and
Connected Aircraft,
Gogo Business Aviation



2:00PM | Wednesday, Feb 8

Dr. Richard Soley
Chairman, Object Management Group
& Industrial
Internet Consortium



2:30PM | Wednesday, Feb 8

Fred Yentz
CEO, IoT Platforms, Telit



3:00PM | Wednesday, Feb 8

John Horn
CEO, InGENU



3:30PM | Wednesday, Feb 8

Kelly H. Gay
COO, Numerex



9:30AM | Thursday, Feb 9

Alex Brisbane
CEO, Kore



10:00AM | Thursday, Feb 9

Maciej Kranz
VP, Corporate Strategic
Innovation Group, Cisco



10:30AM | Thursday, Feb 9

Mary Beth Hall
Director Global IoT Product and
Development,
Verizon Wireless



11:15AM | Friday, Feb 10

Gary Davis
COO, Chief Consumer
Security Evangelist
Intel Security



	Tuesday, February 7, 2017				
8:00am	Registration, Breakfast, Networking (Outside Grand A/B)				
9:00am	Telit IoT Innovation Keynote Presentation - Welcome Address by Telit (Grand A/B)				
9:20am	Telit Keynote Presentation by FAU - Achieving the Full Potential of a Connected World (Grand A/B)				
9:40am	Telit IoT Innovation Keynote Presentation by Flextronics (Grand A/B)				
10:00-10:45am	IoT Certification Course - IoT Primer (Grand D)				
10:00am	Telit IoT Innovation - Networking Coffee Break (Outside C/E)				
10:30-11:05am	Telit IoT Innovation Smart Solutions: Panel: How Will We Participate in the 4th Industrial Revolution? (Grand C)	Telit IoT Innovation Tools, Technologies & Resources: IoT Development Plans: Why You Need to Accelerate the Move to LTE (Grand E)			
10:45-11:30am	IoT Certification Course - The DNA of IoT (Grand D)				
11:10-11:45am	Telit IoT Innovation Smart Solutions: IoT - The Internet of Trash™ (Grand C)	Telit IoT Innovation Tools, Technologies & Resources: You Want an IoT Strategy, Now What? A Practical Decision Making Framework (Grand E)			
11:50am-12:25pm	Telit IoT Innovation Smart Solutions: Imagination to Integration - Role of IoT in Smart Factory Transformation (Grand C)	Telit IoT Innovation Tools, Technologies & Resources: Telit Rapid IoT Dev Kit: IoT Prototyping Made Easy (Grand E)			
11:45am-12:30pm	IoT Certification Course: IoT Glue: What Keeps Things Connected? (Grand D)				
12:25pm	Telit IoT Innovation - Luncheon (Grand A/B)				
12:30pm	IoT Certification Course - Lunch Break (Grand D)				
TRACK ROOM	Telit IoT Innovation Smart Solutions (Grand C)	Telit IoT Innovation Tools, Technologies & Resources (Grand E)	deviceWISE Certification (Grand F)	Machine Learning Certification (Grand D)	
	Smart Insurance: How Jooycar Makes Driving Safer, Easier, and Less Expensive	Hands-on LTE Antenna Integration			
			Introduction to Telit & deviceWISE	Machine Learning Intro: New Rules	
	From Sensors to Cloud: Complete Smart Cities Solutions	Live Demo: GNSS Applications & Telit IoT Enablement			
			Developing with deviceWISE AT Commands	Machine Learning Impact on IoT	
	Arrow IoT Evolve Offering - Delivering Idea to Impact, Opportunity to Execution	What Makes a Leading Global IoT Platform			
			Using AT Commands with deviceWISE Hands on Lab	Machine Learning IoT ROI	
	Personal Security and the IoT: How RiskBand is changing how businesses protect their employees	Panel: How to Generate Revenue with IoT			
	4:00-6:00pm	Telit IoT Innovation - Best Practices Showcase (Grand A/B)			
	6:00-7:30pm	Reception in Telit Pavilion on Expo Floor (Hall B)			

Agenda At-A-Glance



Wednesday, February 8, 2017

8:30am	Continental Breakfast - Full conference passes only (Outside A/B)					
8:30-9:00am	Industrial IoT - This is the Next Industrial Revolution: The Floor Ahead (Grand H)					
TRACK ROOM	IoT IT - BI and Machine Learning (Grand D)	Connected Building and Cities (Grand C)	Connected Transport/ Connected Industry (Grand G)	IoT Enterprise Operations (Grand E)	Industrial IoT (Grand H)	IoT Developers (Grand F)
	Connected Support in the Connected World	Home Automation: What's Cool Beyond the Thermostat?	IoT & Autos: What are We Looking for Assistance or Autonomy?	Managing an IoT Business is difficult. Is there a way to Simplify It?		Three Software Stacks Required for IoT Architectures
	The IoT ROI for Big Data	How Smart Cities' IoT Capabilities Are Transforming Workplace	Enabling Smart Workers with Smart Devices	MVNO's Every Enterprise is Global	Yokogawa Strategic IIoT Architecture Partnership	Stump the Experts
9:00-9:55am						
10:00-10:55am						
11:00-11:55am	Predictive and Prescriptive Analytics	Wireless Lighting Control and Industrial and Enterprise Applications	Driver Assisted Insurance Reduced Connected Cars	SIMs, ESIMs and IoT Opportunities	Testbed Use Case 2: Asset Efficiency	Enabling Voice-Driven Smart Home Experiences with Amazon Alexa
12:00pm	Conference Luncheon - Featuring Keynote by GoGo Air - Full conference pass required for lunch (Grand A/B)					
1:00-1:55pm	General Session Panel - Analyze What IoT? (Grand A/B)					
1:00pm	Industrial IoT - Testbed Use Case 1: Creating Enterprise Value through Digital Industrial Transformation (Grand H)					
2:00pm	Keynote Presentation by Industrial Internet Consortium (Grand A/B)					
2:30pm	Keynote Presentation by Telit (Grand A/B)					
3:00pm	Keynote Presentation by Ingenu (Grand A/B)					
3:30pm	Keynote Presentation by Numerex: "Keeping it Real" - The Reality of the IoT (Grand A/B)					
4:00pm	General Session Panel - The Industrial Internet: Fireside Chat (Grand A/B)					
5:00-7:00pm	IoT Evolution Expo Exhibit Hall Grand Opening Reception (Hall B)					
5:15pm	IoT Solutions in LatAm (Expo Hall Theatre, Hall B)					
5:45pm	Why "Reuse and Recycle" Won't Work for IoT Security (Expo Hall Theatre, Hall B)					
6:15pm	IoT & LatAm RFID Use Cases (Expo Hall Theatre, Hall B)					

Thursday, February 9, 2017						
8:00am	Continental Breakfast - Full conference passes only (Outside Grand A/B)					
8:30am	General Session Panel - IoT Money Matters (Grand A/B)					
9:00-9:55am	Industrial IoT - Testbed Use Case 3: Emergency Services and Big Data (Grand H)					
9:30am	Keynote Presentation by KORE (Grand A/B)					
10:00am	Keynote Presentation by Cisco - Starting a Successful IoT Journey (Grand A/B)					
10:30am	Keynote Presentation by Verizon (Grand A/B)					
11:00am-4:00pm	IoT Evolution Expo Exhibit Hall Open (Expo Hall B)					
11:15am	IoT in the Channel - Managing the Channel at the Beginning (Expo Hall Theatre, Hall B)					
11:45am	IoT in the Channel - Inventing the IoT Future! (Expo Hall Theatre, Hall B)					
12:00pm	Conference Lunch Tickets Provided - Full conference passes only (Hall B)					
12:15pm	IoT in the Channel - Making the Jump and Solving the Last Mile of IoT (Expo Hall Theatre, Hall B)					
12:45pm	Business Impact Awards (Expo Hall Theatre, Hall B)					
TRACK ROOM	Open Fog Workshop (Grand D)	Connected Building and Cities (Grand C)	Connected Transport/Connected Industry (Grand G)	IoT Enterprise Operations (Grand E)	Industrial IoT (Grand H)	IoT Developers (Grand F)
	Introduction, Overview and Use Cases	Real Solutions for IoT and Smart Cities	Keeping Inventories Moving	Remote Monitoring and Management		Rapid Prototyping for Cat M1 (Live Demo!)
1:00-1:55pm	IoT in the Office Workplace: When and How? (Expo Hall Theatre, Hall B)					
1:45pm						
2:00-2:55pm	Architecture & Security Strategies	IoT and the Smart Building Energy Management	Technology Trifecta for a Successful IoT Deployment: Design, Security, OTA	Patients, Physicians and Hospitals	Big Data & Analytics: It Takes an Ecosystem	Cloudy IoT Implementations
2:15pm	Startup Showcase (Expo Hall Theatre, Hall B)					
2:45pm	Best in Show Awards (Expo Hall Theatre, Hall B)					
3:00-3:55pm	Fog Computing in an IoT World	There's a New Network in Town	Telecom and IOT: Evolving at the Core	Asset Management	Testbed Use Case 4: IoT Platforms for the Factory Floor	Lessons in Connectivity and Support
4:00-5:00pm	General Session Panel - How Data is About to Change Smart Cities (Grand A/B)					
8:00pm	IoT Evolution Conference Party at The Ritz Carlton - Sponsored by Gemalto, Senet and Sequans					

Friday, February 10, 2017				
8:30am	Continental Breakfast - Full conference passes only (Outside A/B)			
TRACK ROOM	IoT IT - BI and Machine Language (Grand D)	Connected Building and Cities (Grand C)	IoT Enterprise Operations (Grand E)	IoT Developers (Grand F)
	Machine Learning and the Cloud	Beacons and Retail	IoT: The Internet of Tanks	Resource Constrained Devices...The Most Powerful Things in IoT?
9:00-9:50am	IoT Security Summit - State of the Disunion (Grand H)			
9:00-9:25am	IoT Security Summit - Top Down or Bottom Up: Who is at Fault, and who Should Take Action Right Now? (Grand H)			
9:30-9:55am	IoT Security Summit - Standards Bodies for Security (Grand H)			
10:00-10:50am	Survey Says: Analytics Rules	IoT and Sustainable Resources	What is Up with this CAT 0, and all These Other CATs?	Developing an Edge System with Advanced Device Management Capabilities
10:00-10:25am	IoT Security Summit - HIPAA for IoT (Grand H)			
10:30-10:55am	IoT Evoution Expo Exhibit Hall Open (Hall B)			
11:00am-2:00pm	Keynote Presentation - Keynote Address by Intel (Hall B)			
11:15-11:45am	IoT Security Summit - Common Ground Solutions (Hall B)			
11:50am-12:15pm	Special Presentation in IoT Evolution Expo Theatre (Hall B)			
12:30pm				

Registration Hours

Tuesday, February 7: 8:00 AM – 5:00 PM
Wednesday, February 8: 7:30 AM – 7:00 PM
Thursday, February 9: 8:00 AM – 5:30 PM
Friday, February 10: 8:00 AM – 2:00 PM

Exhibit Hall Hours

Tuesday, February 7: 6:00 PM - 7:30 PM
 Reception in Telit Pavilion on Expo Floor (Open to all attendees)
Wednesday, February 8:5:00 PM - 7:00 PM
 Exhibit Hall Grand Opening Reception
Thursday, February 9:.....11:00 AM - 4:00 PM
Friday, February 10:11:00 AM - 2:00 PM



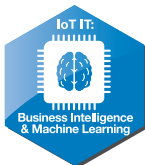
Company	Booth	Company	Booth
Aeris	3007	InHand Networks	Table 7 *
Aizoon USA Inc.	2003	Intertek	2000
Altaworx	6011	Ispirata	2029
Anritsu Company	3006	Janus Remote Communications.	Table 10*
Arrow Electronics	4011 *	KORE	6004
Aware360	1003	Link Labs.....	1003
Axis Communications	5024	Litmus Automation	2007
Azul Systems	1011	NimbeLink	2006
Bayshore Networks	3010	Numerex Corp.....	4003
beamSmart	Table 8*	Octo Telematics North America	2012
Berkeley Variatronics Systems	Table 19*	Reality AI	3031
CENTRI Technology	2016	Resolvit.....	2010
Cisco.....	3016*	Rev.io	6011
ClearBlade, Inc.	1013	RioT.....	Table 14*
Connected Development.....	Table 9*	scriptr.io	1026
Danlaw Inc	Table 13*	Senet	1006
DELTA	2007	Sprint	3022
Dense Networks	1004	Sprint.....	Meeting Room 118
Digi	Table 18*	Sub U System	2028
DMI.....	4023	Supply & Demand Chain Executive	1010
Dunn Solutions	2008	Symmetry Electronics.....	Table 17*
Encore Networks	5017	Systech Corporation	4006
Eurotech Inc.	3000	Systema America	6005
Gatetel	Table 20*	Taoglas	Table 12*
Gemalto	2011	TEOCO Corporation	Table 16*
Geotab.....	3001	T-Mobile	Table 11*
GetWireless	6010	Tactical Network Solutions.....	2002
GIGA-TMS INC.....	5027	Telit	1217
Globecom Systems Inc.	4022	U.S. Cellular	Table 15*
iBusiness Magazine	1012	Yokogawa.....	4010*
Industrial Internet Consortium.....	1014		
Ingenu	Meeting Room 119		

*IoT Innovation Pavillion

Floor Plan



Greater Ft. Lauderdale/Broward County Convention Center
February 7-10, 2017 Fort Lauderdale, Florida



This Way to ITEXPO



Keynote Presentations Grand A/B, 3rd Floor

9:00AM

Welcome Address by Telit

Fred Yentz, CEO, IoT Platforms, Telit

9:20 AM

Keynote Presentation by FAU - Achieving the Full Potential of a Connected World

Jason Hallstrom, Director, I-SENSE, Florida Atlantic University

The Internet of Things represents a vision of a deeply connected world, where sensing, computation, and communication are seamlessly integrated throughout the world around us. The resulting ecosystem of communicating things will be incredibly diverse in its makeup, ranging from vehicles and roadways, to surgical tools and hospital beds, to rivers and plumbing. The collective measurements, calculations, and application possibilities enabled by this new Internet frontier are unprecedented. The Internet of Things is poised to revolutionize products and markets and have a profound impact on society. Achieving the full potential of a deeply connected world requires partnerships that span industry, academia, and government – the same types of partnerships that laid the foundation for the Internet of Things. This talk will survey the past, present, and future of IoT, and the incredible opportunities that are already beginning to unfold.

9:40AM

Keynote Presentation by FAU - Achieving the Full Potential of a Connected World

Bret Martin, Sr. Director, Business Development, Flex

Telit IoT Innovation Smart Solutions Grand C

10:30-11:05am

Panel: How Will We Participate in the 4th Industrial Revolution?

Brian Dalgetty, IoT Industry Solutions Offering Leader, IBM;

Tom Snyder, Executive Director, NC RIoT;

Larry Steffann, General Manager, Wireless Research Center of North Carolina;

Fred Yentz, CEO, IoT Platforms, Telit

11:10-11:45am

IoT - The Internet of Trash™

Jay Alter, CFO, OnePlus Systems;

Alan Williamson, CTO, OnePlus Systems

11:50am-12:25pm

Imagination to Integration - Role of IoT in Smart Factory Transformation

Thiag Loganathan, President, Big Data Insights, DMI;

Randeep Nambiar, Co-Founder & COO, Stellium Inc.

1:20-1:55pm

Smart Insurance: How Jooycar Makes Driving Safer, Easier, and Less Expensive

Nathan Lustig, Director, Jooycar

2:00-2:35pm

From Sensors to Cloud: Complete Smart Cities Solutions

Alex Mateo, Sales & Operations Planning / Industry Manager Smart Cities, Libelium

2:40-3:15pm

Arrow IoT Evolve Offering - Delivering Idea to Impact, Opportunity to Execution

Jeth Harbinson, Director, IoT Business Development, Arrow

3:20-3:55pm

Personal Security and the IoT: How RiskBand is Changing how Businesses Protect their Employees

Jim Van Law, CEO, Risk Band/Wearable Technologies;

Tools, Technologies & Resources Grand E

10:30-11:05am

IoT Development Plans: Why You Need to Accelerate the Move to LTE

Manish Watwani, VP, Global Product Marketing, Telit

11:10-11:45am

You Want an IoT Strategy, Now What? A Practical Decision Making Framework for Designing a Flexible Enterprise IoT Deployment

Jeff Newman, VP Corporate Business Development, CalAmp

11:50am-12:25pm

Telit Rapid IoT Dev Kit: IoT Prototyping Made Easy

John Keever, CTO, Telit

1:20-1:55pm

Hands-on LTE Antenna Integration

Chris Anderson, VP Engineering, Taoglas

2:00-2:35pm

Live Demo: GNSS Applications & Telit IoT Enablement

Suren Deorem, Field Application Engineer, Telit

2:40-3:15pm

What Makes a Leading Global IoT Platform

Dima Tokar, CTO & Head Analyst, MachNation

3:20-3:55pm

Panel: How to Generate Revenue with IoT

Tim Acker, VP, Mobility & Connected Solutions, SYNEX;

Scott Scheuber, Director, Product Management -

Business Solutions, US Cellular;

Steve Brumer (Moderator), Partner, 151 Advisors

4:00pm

Telit Best Practices Showcase Grand A/B

Presenting Companies



Reception at 6:00pm

A Complete IoT Platform-as-a-Service

Gateway



Billing

Network



Connections



Solutions



In one, easy-to-use IoT management portal.

Numerex



nxFAST | *Powering the IoT, Empowering Your Business.*

You don't have to be an IoT expert! Let Numerex get your solutions to market quickly, remove the risk, and deliver the power of the IoT to help build your business.

To find out more call 1-877-686-3739, or visit numerex.com/platform.

Visit us at IoT Evolution Booth #4003

Wednesday, February 8, 2017

1:00pm

Analyze What IoT?

*James Brehm, James Brehm & Associates;
Andy Castonguay, Machina Research;
Ryan Martin, ABI Research;
J. Gerry Purdy, Ph.D., Mobilicity;
Carl Ford (Moderator), Crossfire Media*

We have a deviation in our projections for the number of IoT devices in the tens of billions. How do we account for the different projections for IoT solutions between 20B to 50B IoT devices deployed by 2020? Is this a problem with hype, or the presumption that starts the count? We ask analyst's friends to get us to the real numbers, the real successes and the real world.

4:00pm

The Industrial Internet: Fireside Chat

*Dr. Richard Soley, Object Management Group, LLC;
John Tuccillo, Steering Committee Chair, Schneider Electric;*



IoT Security Summit

Grand H



Friday, February 10, 2017

9:00am

State of the Disunion

*Franco Potepan, Eurotech, SpA;
Ken Briodagh (Moderator), IoT Evolution World*

This General session roundtable will feature IoT security experts who will outline and discuss the challenges the industry faces in putting security standards in place now, what mistakes have been made and make recommendations on what the next steps should be.

9:30am

Top Down or Bottom Up: Who is at Fault, and who Should Take Action Right Now?

*Carl Ford, Crossfire Media;
Grant Asplund, CENTRI;
Chris Drake, iconectiv;
Vince Ricco, Axis Communications;
Tim Evavold, Covisint;
Gerard Hayes, Ph. D., Wireless Research Center of NC;
Ken Briodagh (Moderator), IoT Evolution World*

Ken Briodagh, editorial director of IoT Evolution and Carl Ford, CEO, Crossfire Media, and their guests, will argue the problems facing the industry now and whether or not the OEMs or the DNSSec folks need to go to the woodshed.

Thursday, February 9, 2017

8:30am

IoT Money Matters

*Pavel Cherkashin, GVA Capital;
Michael Crawford, Q Advisors LLC;
Scott Snyder, SafeGuard Scientifics;
Fred Thiel, Thiel Advisors, Inc.;
James Turino, Drake Star Partners;
Mike Walkley, Canaccord Genuity Research;
James Brehm (Moderator), James Brehm & Associates*

As we look at the industry we see a lot of dynamics in play. The first is that we have lots of start-ups who are going through their early rounds of funding and often are the darlings of the press. Then we have the companies that are already successes that are looking to find growth in acquisition. IoT is full of opportunities, we have asked panel to help show us where IoT money matters.

4:00pm

How Data is About to Change Smart Cities

Trevor Curwin, Read Write

IoT is starting to power the evolution of smart cities. But as new services and devices are deployed, the real value will be in how cities and partners can drive revenue from the resulting data, while still protecting the privacy of citizens.



10:00am

Standards Bodies for Security

*Steve Hanna, Infineon and Trusted Computing Group;
Ken Briodagh (Moderator), IoT Evolution World*

Standards Bodies for Security are often a cry for consensus or a coalition of the willing. We have asked the existing standards bodies to discuss their activities, their interfaces and what developers should understand before coding an IoT solution.

10:30am

HIPAA for IoT

*Cedric Leighton, Cedric Leighton Associates, LLC;
Ken Briodagh (Moderator), IoT Evolution World*

It's time we stop ignoring privacy and start taking responsible steps to earn the trust of the users.

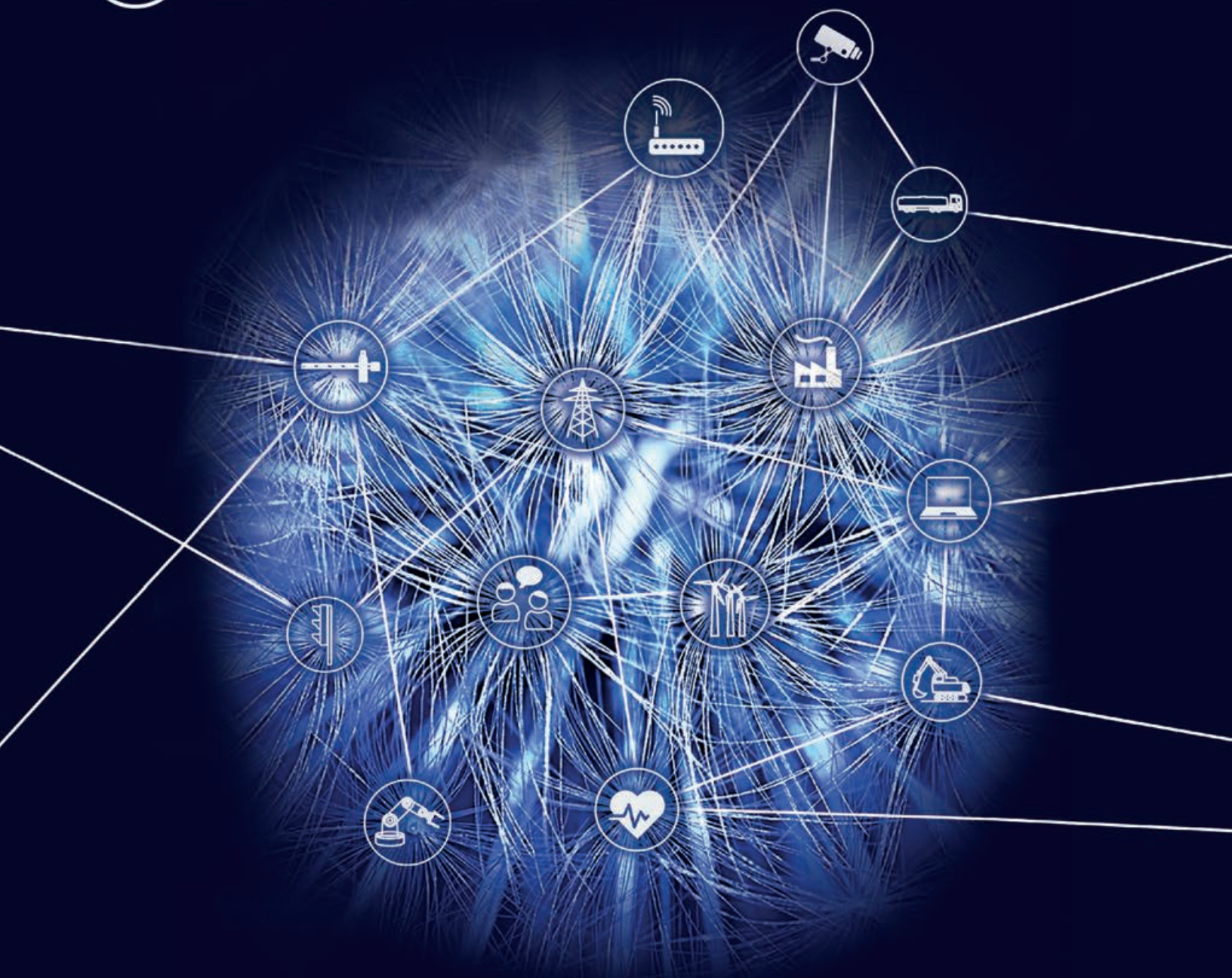
11:50am

Common Ground Solutions

*Maarten Bron, UL Transaction Security Division;
Ken Briodagh (Moderator), IoT Evolution World*

In this closing session, we'll try to take all that we've discussed during the day and posit some concrete solutions and strategies to avoid the worst: an IoT that will never meet its potential thanks to failures and lack of trust. The audience will be invited to join the discussion and offer ideas and will leave with a list of next steps.

IoT Evolution Expo East
February 7-10, 2017 | Ft Lauderdale, FL - USA
Booth 3000



SPARK YOUR IMAGINATION

Bring your ideas to life with Eurotech's innovative tools

IoT Gateways - Middleware for IoT Gateways - IoT Consulting Services -
IoT Integration Platform

Solutions.us@eurotech.com

www.eurotech.com

1.800.541.2003

Tuesday, February 7, 2017 IoT Certification Course

10:00am

IoT Primer

Richard Brennan, Telxix

IoT Evolution Certification provides a framework for the vast IoT market. A market that spans from connected home products to machine learning. Is the market potential Billions? Trillions? How do we get there from today's initial deployments?

Key industry terms will be defined and their usage described, including the distinction between, and co-dependence of IoT and M2M.



10:45am

The DNA of IoT

Richard Brennan, Telxix

Devices, Networks and Applications are the DNA of IoT. This session begins with a discussion on 'Things' e.g. Sensors, Wearables, Constrained Devices, and MEMS, and the role each plays in building and implementing a fully interconnected IoT. The need to tie together this myriad of edge technologies leads to an overview of the current landscape in Sensor Networking Topologies. This includes wireless topologies such as 3G/4G, 5G and Mesh, as well as the extensive list of networking capabilities coming from: All seen, Apple, Google, OIC, ZigBee..and others.

11:45am

IoT Glue: What Keeps Things Connected?

Richard Brennan, Telxix

The IoT cannot become pervasive on a single device family, or on a single edge network type. This session brings it all together and explains how IP-based M2M communications capabilities such as CoAP, HTTP, and MQTT allow sets of systems to be aggregated, to interwork, and to federate. These are the tools needed to scale massively, and to build interconnected applications and services; extending from multi-room..to multi-national, and fulfilling the promise of the IoT; "Everything Connected".

1:30pm

Machine Learning Intro: New Rules

Giuseppe Mascarella, Value Amplify Consulting

What is it that Machines are learning? How intelligence is being packed into ML for IoT? This is an overview of what Machine Learning is and does with IoT.

2:15pm

Machine Learning Impact on IoT

Giuseppe Mascarella, Value Amplify Consulting

How does the use of Machine Learning impact IoT implementations? Does Edge Processing take advantage of ML? What kind of alarms and thresholds need to be used to make sure ML is being applied properly.

3:15pm

Machine Learning IoT ROI

Giuseppe Mascarella, Value Amplify Consulting

The Software of ML is the final session. Who supports ML solutions and how do you access these resources? Is this an all or nothing strategy, or can you slowly integrate ML into your IoT solution?

deviceWISE Workshop

Grand G

Tuesday, February 7, 2017 deviceWISE Workshop

This workshop is targeted at individuals who are interested in understanding IoT as a broader concept, while also learning (and executing) the many ways in which they can implement IoT within their own organization. Topics discussed include: Fundamentals of IoT, Starting a Solution, Connectivity Standards and Protocols, deviceWISE Management Portal, and more. Suggested Skillset: Basic functional computer skills, basic understanding of IoT, and a simple understanding of APIs. Understanding of AT commands a plus.



1:30pm-4:00pm

Introduction to Telit & deviceWISE

2:15-3:00pm

Developing with deviceWISE - AT Commands

3:15-4:00pm

Hands-On Lab- Using AT Commands with deviceWISE

Topics: Fundamentals of IoT, Starting a Solution, Connectivity Standards and Protocols, deviceWISE Management Portal, and more.

Length: Three hours' total time. Short portion dedicated to education with the majority of time dedicated to hands-on activities.

Suggested Skillset: Basic functional computer skills, basic understanding of IoT, and a simple understanding of APIs. Understanding of AT commands a plus.

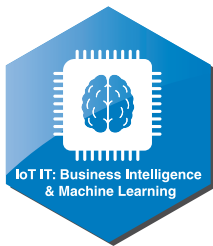
***Limited to 25 Attendees. Must have RSVP in advance and received course confirmation materials.**





**Innovate with the
Internet of Things.**

Sprint.com/IoT



IoT IT - BI and Machine Learning Grand D

Wednesday, February 8, 2017

9:00-9:55am

Connected Support in the Connected World

Lee Gruenfeld, TechPar Group;
Warren Katz, iDevices;
Curt Schacker, EVERYTHING

Every provider of a product or service understands the critical role of post-sale support, but what's less well understood is how dramatically the nature of that support has shifted when it comes to the IoT. It ain't the same ol', same ol', and it's no longer about sitting by the phone waiting for something to break and then fixing it. This distinguished group of panelists will tackle tough questions about supporting the Internet of Things, such as: How do you seamlessly support both customers and field operations? What's the role of self-support in the connected world? How does the IoT make it easier to use "contextual intelligence" in supporting customers? How are concerns about privacy and security likely to impact our ability to connect to a customer's devices and systems?

10:00-10:55am

The IoT ROI for Big Data

Tristan Barnum, Tellient

With all these sensors out in the real world, the data repositories are getting quite large. The result is that Big Data has tremendous volumes of information, but does having the information equate to using the knowledge? This session gets into the issues associated with using the IoT information beyond the monitoring for business intelligence and direct impact on the bottom line.

11:00-11:55am

Predictive and Prescriptive Analytics

Dan Gettens, OnProcess Technology;
Thiag Loganathan, DMI;
Godfrey Chua (Moderator), Machina Research

At a simple level, predictive analytics tells us what to expect, while prescriptive tells us how to manage it. How do IoT information streams tell us about the trends of our machinery? How much data is needed for analytic systems to spot trends? If trends can be spotted, can analytics data make it so that IoT failure rate is minimized? How can analytics add to the availability of systems?



Thursday, February 9, 2017

1:00-1:55pm

Introduction, Overview and Use Cases

Charles Byers, Cisco;
Lynne Canavan (Moderator), Open Fog Consortium

The Concepts of Fog Computing is more than bringing the cloud to the Enterprise. This session provides an introduction and overview of Fog Computing. This is followed by a discussion of application and use cases in several verticals include Energy, Industrial, Smart Cities and Transportation.

2:00-2:55pm

Architecture & Security Strategies

Ken Hosac, Cradlepoint;
Lynne Canavan (Moderator), Open Fog Consortium;
Don Banks, ARM and Rob Swanson, Intel

With all the noise about IoT being used to attack the public Internet with a distributed Denial of Service attack, it's critical for Enterprises to build solutions that protect the corporate network inside and out. How do you architect the network to be redundant and secure? How does Fog Computing improve security?

Friday, February 10, 2017

9:00-9:50am

Machine Learning and the Cloud

Giuseppe Mascarella, Value Amplify Consulting
Where do we deploy machine learning and what software and cloud services are out there to support it? What are the trends in deploying these systems and what are the benefits for IT? This session looks at case studies and lessons learned in deploying Machine Learning for IoT specifically.

10:00-10:50am

Survey Says: Analytics Rules

Keith Tamboer, James Brehm & Associates

James Brehm & Associates and IoT Evolution have gathered the results of a detailed survey regarding analytics. This session will discuss the survey results and will explore the current use of IoT analytics in the enterprise.



Open Fog Workshop Grand D

3:00-3:55pm

Fog Computing in an IoT World

Charles Byers, Cisco;
Lynne Canavan (Moderator), Open Fog Consortium

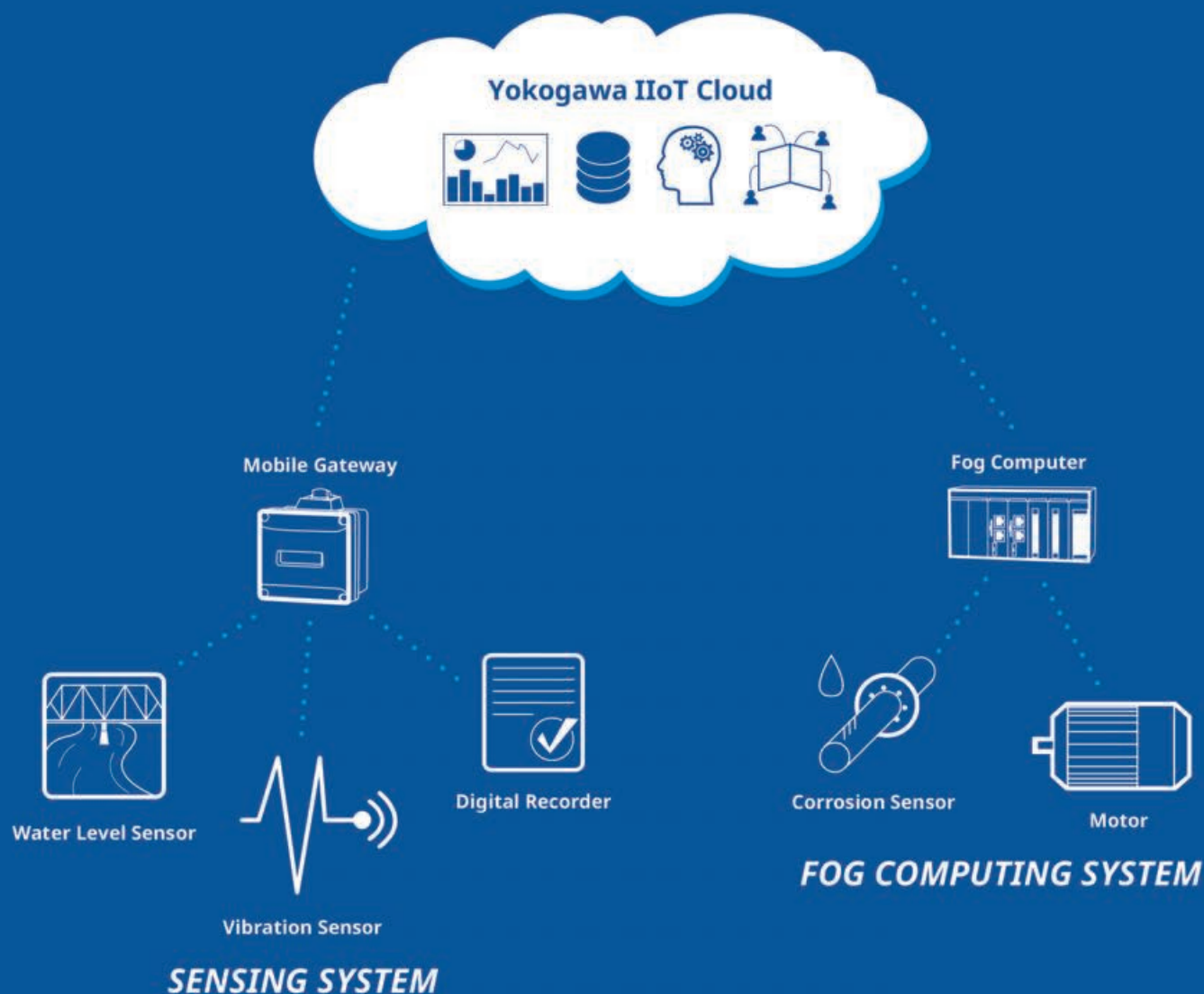
The Fog Computing environment works well as IoT evolves around the world. This panel looks at the future of IoT, Fog Computing and the expectation for future solutions. This discussion will enable the audience to ask experts questions and here strong answers.



Industrial IoT Architecture

One Stop Services

for Sensing, Data Storing, Analyzing, and Application Development





Wednesday, February 8, 2017

9:00-9:55am

Home Automation: What's Cool Beyond the Thermostat?

Rod McLane, Ayla Networks;
J. Michael Palermo, Amazon;
Jeffrey Patton, General Electric;
Robert Richardson (Moderator), TechTarget

While the thermostat gets a lot of attention, the reality is home automation has an incredible amount of gadgets to manage, from refrigerators to doorbells. The question then is not what can be managed, but how can we manage everything? It's not about the IoT device, it's about getting control over entire house no matter where you are. Your proximity and your ability to remotely manage blend together to create the home of the future. Are these capabilities transcending into the office building of the future and the way we work today?

10:00-10:55am

How Smart Cities' IoT Capabilities Are Transforming the Workplace

Andrew Till, HARMAN Connected Services;
Dima Tokar (Moderator), MachNation

IoT's seemingly endless capabilities are uniting city planners and technology experts in a mission to transform metropolises around the world into smart, connected cities. One of the most prominent areas of daily life that will reap the benefits of connected cities technologies is the workplace. The building's architecture will be able to ingest streaming data and sync up with employee's calendars, adjusting their meeting schedules according to availability of workspaces. Heat maps will be able to analyze real time space utilization. The office will act as a data platform, collecting all necessary pieces of information from the building to create more secured and organized facilities, establishing an environment conducive to productivity. Smart offices will foster environments that are conducive to creative, innovative thinking by ridding employees of the need to spend time maintaining the functionality of the physical work space. Smaller companies that take advantage of smart building technologies faster than larger companies will present a competitive advantage to prospective employees, and will attract the next generation of the workforce, who will seek modern workplaces that employ innovative technologies to keep day-to-day business operations running smoothly.

11:00-11:55am

Utilizing the Wireless Lighting Control Network as a Platform for Enabling Industrial and Enterprise Applications

Don Barnettson, Lunera Lighting Inc.;
Kaynam Hedayat, Digital Lumens;
Mark Thirman (Moderator), Telus

The Industrial Internet of Things (IIoT) needs to connect several devices to a common network enabling efficient, reliable data transfer. For most industrial settings, connecting sensors and equipment to the facility network is difficult and tedious; particularly in retrofit applications, where installing new wiring is troublesome, if not impossible. On the other hand, data shows that building owners who have upgraded their lighting infrastructure to wireless lighting controls are easily able to take advantage of additional IIoT opportunities and use the wireless lighting system as the backbone for enabling other IIoT technology applications.

Thursday, February 9, 2017

1:00-1:55pm

Real Solutions for IoT and Smart Cities

Neil Calanni, Eurotech;
Kaila Schmidt, Sprint;
Calvin Lawrence, IBM Cognitive Solutions;
Alex Mateo, Libelium;
Larry Steffann, Wireless Research Center of North Carolina;
Scott Scheuber (Moderator), US Cellular

Air quality, traffic congestion, water pollution or waste management are some problems that cities face everyday. More people live in cities than in rural areas and forecasts estimate this trend will not stop, expecting 75% of world population living in cities by 2050. Real-time data transformed into valuable information can help City Managers to make better decisions and give immediate response to city problems. Moreover, this information will help public authorities make cities more efficient. In this era of austerity, this is an obligation, even more if we are managing public money.

2:00-2:55pm

IoT and the Smart Building Energy Management

Marc Josephson, Coris;
Robert Lutz, Systech Corporation;
Steve Nguyen, BuildingIQ;
Jason Walton, Eurotech;
Richard Scott, (Moderator) Scott Associates

IoT has given rise to new opportunities for smart buildings like apartment complexes and corporate / campus environments. How can these shared buildings use IoT to support common requirements? How can prioritization of resources be used incorporated in HVAC and other building systems.

3:00-3:55pm

There's a New Network in Town

Dave Kjendal, Senet;
Daniel Quant, Multi-Tech Systems, Inc.;
John Reardon, Choctaw Telecom, LLC;
Bobbie Carlton (Moderator), Innovation Women

Smart Cities are happening and for many network designs the use of alternative network solutions are the making sense. This panel features a group of alternative carriers discussing their services capabilities and the benefits they are bringing to smart cities.

Friday, February 10, 2017

9:00-9:50am

Beacons and Retail

Kevin Kostiner, IoT-Strategist;
Oliver Cockcroft, Ayla Networks;
Joyce Deuely (Moderator), Smart Texas Alliance

The latest version of Bluetooth provides an interesting blend of positioning and application that guides and tracks smart phone users to and within the storefront. How is this capability encouraging consumers to make purchases? Does knowing how a customer moves through a store add value to the transaction and analytics for the retailer? What lessons do we have from actual implementations?

10:00-10:50am

IoT and Sustainable Resources

Christopher Celiberti, InField Group;
Robert Dolci, AizoOn US;
Randy Field (Moderator), James Brehm & Associates

Sustainability sounds like an expensive form of ecology, but the reality is that it is an essential part of development and fosters self sufficiency. We have a panel of experts who have applied IoT to sustainable resources and found the value for years to come.

THE MACHINE NETWORK

Purpose-built for supporting M2M/IoT applications, the Machine Network™ is the largest network dedicated to the Internet of Things in the world.



it's simply **GENU**S

- Publicly Available. Privately Available.**
 The Machine Network™ is a public network which means anyone can sign up to use it. Think of it like a cellular network made just for machines. In the same way you sign up to use your smart phone on a cellular network, you can sign up your RPMA® enabled devices on the Machine Network™.
- Wireless Connectivity. No Assembly Required.**
 Out-of-the-box wireless connectivity just works, no configuration required. Businesses run from a home office to entire enterprises can make their business smart and connected with no complex infrastructure to set up and no operations to manage. Just get your devices and go.
- Professionally Managed. Professionally Used.**
 The Machine Network™ is professionally managed which means InGenU does all the hard work so you don't have to. We do the work to provide you seamless connectivity service.
- Connectivity That's Just There. And Here Too.**
 The Machine Network™ currently covers more than 30 major metropolitan areas in the United States, and close to 100 more in the next year. It already provides over 100,000 square miles of wireless coverage, and that's just the tip of the iceberg.

IoT Connected Transport/Connected Industry Track Grand G



Wednesday, February 8, 2017

9:00-9:55am

IoT & Autos: What are We Looking for Assistance or Autonomy?

Ron Felice, IBM Watson IoT;
Paula Hunter, NFC Forum;
Mohamad (Mo) Nasser, Sprint;
Jessica Sweeney, LILEE Systems;
Ryan Martin (Moderator), ABI Research

The Automakers, and the Smart Phone Industry all see opportunity when it comes to a new generation of vehicles. Where are the opportunities and what are the realities the automakers have to face. Is the legacy of manufacturing an advantage or an obstacle to success? Does software rule, even when dealing with thousands of parts.

10:00-10:55am

Enabling Smart Workers with Smart Devices

Sherri McDaniel, ATEK Access Technologies;
Yukon Palmer, Field Logix;
Kim Pearson, New Boundary Technologies;
Dennis Hamann, Mobelisk Technology;
Jeff Liebl (Moderator), Anaren

Smart phones have been integrated into our personal and professional lives, but the potential to drive even more efficiencies lies in the utilization of tablets. Larger displays enable the workforce to have on site real time diagnostics with augmented reality and data visualization. Hear how field services and mobile workers will benefit from IOT understand how to maintain connectivity and maximize workflows in the field.

11:00-11:55am

Driver Assisted - Insurance Reduced Connected Cars

Craig Copland, Swiss Re Management (US) Corporation;
Jessica Sweeney, LILEE Systems;
Nino Tarantino, Octo Telematics;
Colin Sutherland, GeoTab;
Doug Wilson (Moderator), Verizon

If we want to talk about convergence, we don't have to look beyond telematics and the automotive industry. Connected vehicles are making humans better drivers by delivering alerts and alarms concerning our surroundings and our driving behavior. How does this impact insurance? Have we seen an improvement in highway safety? Are there lessons to be learned that can be shared with other industries?

Thursday, February 9, 2017

1:00-1:55pm

Keeping Inventories Moving

Chris Chang, Alien Technology;
Bill Sell (Moderator), Advisor Communications

Wal-Mart has taught us margin can be found in quick rotation rather than higher markups, but that vision needs the benefit of constant reporting on inventory. If products don't move out of the store, the margin leaves. Hear how to keep inventory well managed and how to use RFID technologies to make your supply chain more efficient.

2:00-2:55pm

The Technology Trifecta for a Successful IoT Deployment: Design, Security, OTA

Oren Betzaleli, HARMAN Connect Services;
Sandy Carielli, Entrust Data Card;
Kevin Davenport, Intel

How the combination of networking technologies combined with the 'technology trifecta' of Design, Security and OTA can guide enterprises through a successful IoT deployment. This panel will cover how design and UX is a key cornerstone initiative and how security and over-the-air updates can keep you deployment secure and relevant. This panel also includes a user case study.

3:00-3:55pm

Telecom and IOT: Evolving at the Core

Vladimir Beloborodov, Mera Software Services;
Tom Phelan, Unified Office

The days of POTS are numbered. Mobile Rules! However the reality is that IoT needs adaptation from the telecom models to optimize opportunity. This panel is a discussion of some of the innovations happening to make IoT on Telecom available for better solutions in the marketplace.





DESIGN-LED IoT TRANSFORMATION

Enterprises are looking for IoT solutions to grow and optimize their business. HARMAN believes that design and user experiences are crucial to successful IoT deployment and adoption. This is why we apply design-thinking to all IoT transformation projects. Talk to us to discover how to get started on your design-led IoT transformation journey.

We offer design-led Internet of Things Managed Solutions and Product Engineering Services for



Over the Air
Software Platforms



IoT Gateway
and Devices



Edge and
Cloud Analytics



Embedded
Software



Security and
Authentication

HARMAN executives are speaking this week on Wednesday, February 8th at 10:00 a.m. and Thursday, February 9th at 2:00 p.m. Check out the show agenda for details.

Start Now

harmanconnected.services/iot





IoT Enterprise Operations Grand E

Wednesday, February 8, 2017

9:00-9:55am

Managing an IoT Business is difficult. Is there a way to Simplify It?

*Dan McDuffie, IoT Strategies;
Donna Yasay, HomeGrid Forum
John D'Angelo, RevX Systems, Corp.*

Every IoT Enterprise / Service Provider is talking about how to increase serviceability and manageability to stay ahead of the competition, diversify connectivity suppliers and reduce costs, all of which lead to massive supply chain complexities. Deploying Business Intelligence solutions to solve these issues is mission-critical, but expensive and timely to implement, but new Over the Top providers are emerging and promise quick results while providing deep insight into your business. This session will explore those options that solve the complexities around IoT Connectivity and reduce the costs associated with them.

10:00-10:55am

MVNO's Every Enterprise is Global

*Mike Coffey, KORE;
Isabel Chapman (Moderator), Machina Research*

Regardless of whether you have offices around the world, the odds are likely that as an enterprise you are servicing worldwide customers. The question then becomes how do support worldwide deployments? This panel discusses the role of an MVNO in delivering IOT solutions that mask the jurisdictional issues and enable Enterprises to scale.

11:00-11:55am

SIMs, ESIMs and IoT Opportunities

*Dave Kjendal, Senet;
Wayne Stargardt, Numerex;
Karl Weaver, Oasis Smart SIM;
Craig Miller, Sequans;
Blake Stone (Moderator), NextGen Global Resources*

Interoperability, in cellular networks, was achieved with the use of SIMs to manage identity, authorization and roaming. For IoT, SIMs often represent a costly addition to the modules and overall deployments. Hear how the use of ESIMs has become an alternative to providing the network's requirement for security and a value ad for an IoT network

Thursday, February 9, 2017

1:00-1:55pm

Remote Monitoring and Management

*Felix Llubes, KORE;
Ryan Martin, ABI Research*

When it comes to Remote Monitoring and Management has increased the need for remote management. While these sensors can bring a great deal of information into focus, managing so many puts pressure on existing RMM systems. How does IoT impact strategies to manage Life Cycle management, update remote systems, maintain connectivity and control. This session focuses in on the advances in RMM solutions associated with IoT.

2:00-2:55pm

Patients, Physicians and Hospitals

*Ravi Srivatsav, NTT Innovation Institute Inc. (NTTI3);
Mahesh Patel, US Cellular;
David Houghton, James Brehm & Associates
Patricia Watkins, Sprint*

Anyone who has been tested at a hospital has witnessed leads going from their body to some medical device. The question is has IoT done anything to change the experience for the patient? This panel looks at medical devices that have taken advantage of IoT to make patient care easier for the healthcare industry.

3:00-3:55pm

Asset Management

*Adrian Newcombe, Trimble;
Shu Gan, Numerex;
Arthur Lozinski, Oornitza;
Paul Scardino, Globecom Systems*

Poor asset management decreases the overall efficiency of an organization and increases the cost of delivering services. This session highlights Enterprise case studies that show how IoT technologies are used in real world deployments to drive inventory optimization, strategic facilities planning and better operational decision-making.

Friday, February 10, 2017

9:00-9:50am

IoT: The Internet of Tanks

Sridhar Ramachandran, Numerex;

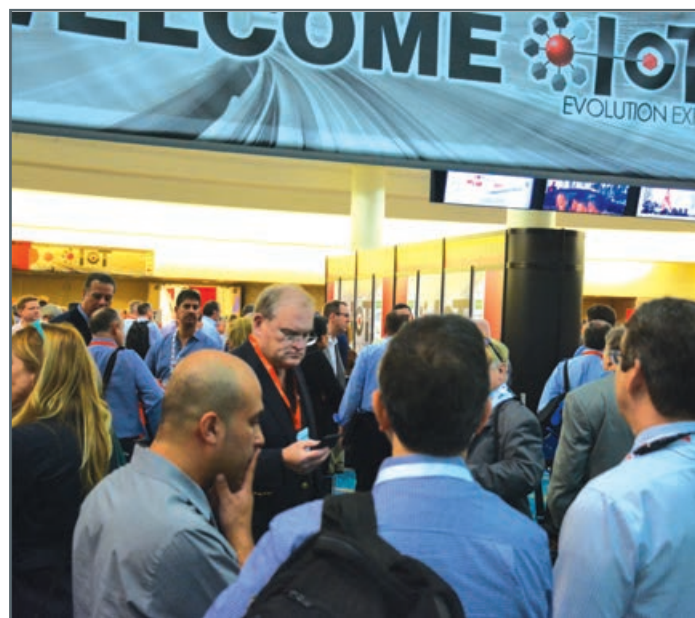
Liquids and Gas are often placed in remote places where they are needed regardless of how volatile their properties. With the benefit of connectivity remote monitoring is improving the management of inventory and the ability to react to troubling conditions. Currently only a small percentage of the existing structure is connected, this panel discusses prioritization and best practices for owners, distributors and suppliers

10:00-10:50am

What is Up with this CAT 0, and all These Other CATs?

*Andy Germano, BEC Technologies;
Angel Mercedes, Sierra Wireless;
Doug Wilson (Moderator), Verizon*

Industries have a tendency to be Acronym crazy, but in this case its confusing is it an abbreviation for CAtEgory, or an acronym for Category of Antenna Types? For the Enterprise's that question is irrelevant. What is relevant is why these different CATs are needed and how can they be used to benefit their IoT deployments. This session explains the differences the value in deployments and the release schedule.



Get IoT off the ground quickly with ThingSpace.

Build on a simple, open development platform.

- Dream
- Develop
- Deploy

verizon✓



Industrial IoT Grand H

Wednesday, February 8, 2017

8:30-9:00am

This is the Next Industrial Revolution: The Floor Ahead

*Carl Ford, Crossfire Media;
Dr. Richard Soley, Object Management Group & Industrial
Internet Consortium*

We all have high expectations of IoT enhancing production techniques, providing more direct interfaces to the supply chain and enhancing real time quality assurance. Who is leading the efforts to make this happen in the market and what role will standards play to ensure we deliver on the promise of the Industrial IoT? How is the Industrial Internet Consortium (IIC) and the Object Management Group (OMG) helping to enable this future? What is the role of industry 4.0? Hear about the results we have seen already and find out how we will judge our successes in the future ahead.

9:00-9:55am

Testbed Use Case 1: Industrial Digital Thread, Asset Efficiency and the Manufacturing Machine

Andy Daecher, Deloitte Consulting LLP

Field engineers and service teams often lack the data and digital insights needed to assess and troubleshoot problems in their large industrial assets. The root cause is usually hidden in design, manufacturing processes, supply chain logistics or production planning. But without the right data and digital insights, it's hard for QA engineers to pinpoint the root cause of problem. The Industrial Digital Thread (IDT) testbed drives efficiency, speed, and flexibility through digitization and automation of manufacturing processes and procedures. This test bed case study focuses on a service engineer that observes a component that is wearing and degrading at an unexpected rate. Leveraging the IDT Testbed, she identifies the correlation between that part's field performance data and its associated manufacturing machine, operations, and quality validation data when it was produced. Through this insight, she identifies the cause and selects a work scope to repair the part.

10:00-10:55am

Yokogawa Strategic IIoT Architecture Partnership

*Yuta Endo, FogHorn;
Bob Lam, Bayshore Networks;
Casey Taniguchi, Yokogawa;
Mark R. Beckmann, Microsoft;
Fred Yentz (Moderator), Telit*

Yokogawa is a leader in energy production. A key component to the industrial Internet is the use of IoT to improve management of the manufacturing floor and the supply chain from production to distribution. Developing a platform that allows "Just in Time" to benefit from the Real-Time of IoT was at the heart of Yokogawa's implementation. Learn how Yokogawa benefits from IIoT.

11:00-11:55am

Testbed Use Case 2: Asset Efficiency and Landing Gear: Keeping up with What Comes Down

Arthur Silva, Schneider Electric

Eighty five percent of manufacturing companies globally are aware of asset efficiency, but only 15 percent have implemented it at a systematic level. The objective of this test bed is to show how to collect asset information efficiently and accurately in real-time and run analytics to make the right decisions. This aircraft landing gear use case, which is based on the Asset Efficiency Testbed, enables automatic detection, diagnosis, prognosis, and mitigation of adverse events arising from component failures; ensures flight safety and reduction in the overall operational and maintenance costs.



Thursday, February 9, 2017

1:00-1:55pm

Testbed Use Case 3: Emergency Services and Big Data

Said Tabet, Dell

This test bed is an Industrial Internet innovation platform built specifically for the development of Industrial Internet products and solutions. This test bed can be used across a wide and diverse range of industries and sectors. This use case shows how smart data can enhance and improve the service provided by emergency service vehicles. Consider the scenario where an emergency service vehicle is dispatched to an incident. What if the real-time GPS data generated by the emergency service vehicle can be combined with other real-time data from diverse sources such as: current traffic levels for all routes to the incident, location of roadwork, diversions and road closures?

2:00-2:55pm

Big Data & Analytics: It Takes an Ecosystem

Wael Diab, Huawei

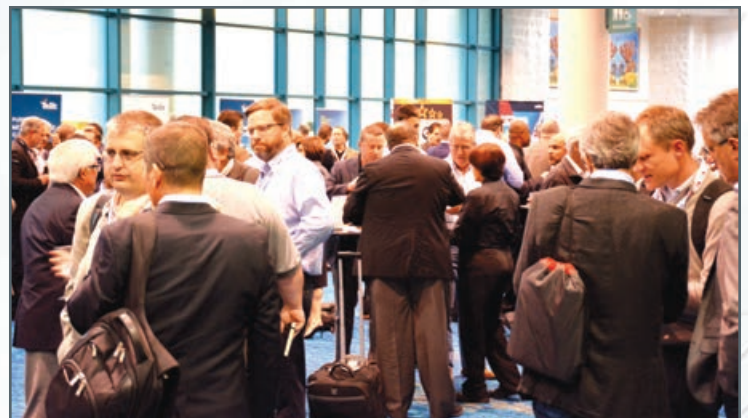
We are all busy gathering lakes and streams of the big data, but the key to success maybe sharing information to create an ocean of awareness. Big data analytics touches many functions, groups, and people in organizations. A successful data and analytics strategy requires interaction within and outside an organization. How do companies collaborate on improving analytics? What resources exist today to assist in ensuring success?

3:00-3:55pm

Testbed Use Case 4: IoT Platforms for the Factory Floor

Patrick Franklin, GE Digital

For nearly a century, machine automation has been primarily a stayed on the factory floor. However the goals of just in time manufacturing and rapid product development point to an increasing need for a feedback loop between production and product management. There is a growing expectation for overall optimization that uses data related to manufacturing in the increasingly global supply chain to connect the front lines of manufacturing with management, suppliers, and customers. Owners and Factory Operators by just developing core logic of each application.





CORIS monitors temperatures and controls energy over the Internet, protecting the heart of your business.

SIMPLE TO USE

GRAPHS & ANALYTICS

SCALABLE

EASY TO INSTALL

LOW COST

CORIS remotely monitors and controls HVAC, lighting, and appliances saving energy and making your building "smart".

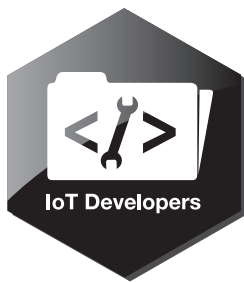
With CORIS controls and sensors, you can:

- ✓ Remotely program your thermostats to set back temperatures on weekends and at night, saving significant energy costs.
- ✓ Make sure interior and exterior lights and plug-in appliances, such as window air conditioning units and vending machines, are turned off after hours.
- ✓ Be alerted to problems in remote buildings (e.g. HVAC failures, floods, power outages, potential frozen pipes) so action can be taken while problems are small and less expensive to fix.
- ✓ Predict compressor failures for air conditioning units and for refrigeration units using CORIS advanced analytics.
- ✓ Participate in Automated Demand Response programs, providing an additional income stream for your buildings.

CORIS was one of the pioneers of the Internet-of-Things with significant installations starting in 2010.

Find out why insurance companies, universities, laboratories, and property management companies choose CORIS:

www.corisecs.com



IoT Developers Grand F

Wednesday, February 8, 2017

9:00-9:55am

Open Source Strategies with IoT

Ian Skerrett, Eclipse Foundation

Many companies contribute to IoT solutions within the Open Source Community. This session is an overview of what the communities are developing and how they can reduce the time to develop IoT.

10:00-10:55am

Stump the Experts

John Keever, Telit

Bring us your toughest IoT problem for our experts to solve. Telit and friends will bring their technical support staff to help you solve your most pressing IoT challenges to get your project to market faster.

11:00-11:55am

Enabling Voice-Driven Smart Home Experiences with Amazon Alexa

Mark Heckler, Pivotal Software, Inc.;

J. Michael Palermo, Amazon

Alexa, the voice service that powers Amazon Echo, Echo Dot, Amazon Tap and Amazon Fire TV, provides a set of built-in abilities, or skills, that enable customers to interact with smart home devices in a more intuitive way using voice. Examples of these skills include the ability to control lighting and temperature. Customers can then access these new skills simply by making a command to Alexa. This session will walk through the Smart Home Skill API and showcase what is possible today.

Thursday, February 9, 2017

1:00-1:55pm

Rapid Prototyping for Cat M1 (Live Demo!)

Brandon Hart, Nimbelink;

Uzair Siddiqui, Verizon

LTE Category M1 (LTE-M) is here! But how do you start using it? Nimbelink and Verizon ThingSpace will use the brand new Cat M1 Skywire modem and off-the-shelf dev kits to create a working prototype in minutes using Thingspace IoT Platform. The prototype will use the Verizon Cat M1 network to send data to the ThingSpace platform where it can be displayed and analyzed. Come and see how quick and simple it can be to get started using the latest technology on one of the most advanced networks.

2:00-2:55pm

Cloudy IoT Implementations

Vatsal Shah, Litmus Automation

The support of IoT by Amazon, IBM, Microsoft and Salesforce suggests that IoT can be deployed rapidly and with little concern for scale. However, the issue of quality assurance needs to be thought through as rapid deployment of code can lead to hacks, and systems that lack thorough testing. This session looks at how IoT support is integrated into cloud services and what developers still need to consider before using the cloud to deploy.

3:00-3:55pm

Lessons in Connectivity and Support

Terra Bastolich, Get Wireless

Before you send your IoT Solutions around the world you need to know how to manage scale and support. This session is about how to develop, deploy and manage connectivity.

Friday, February 10, 2017

9:00-9:50am

Resource Constrained Devices... The Most Powerful Things in IoT?

Johnny Thorington, Synapse Wireless

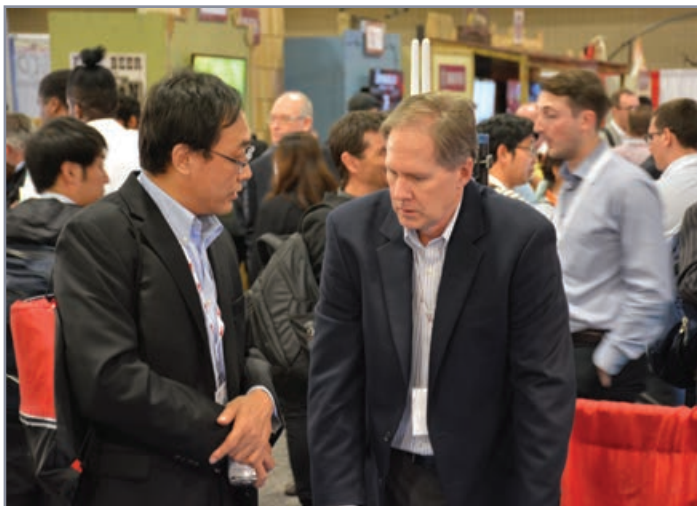
IoT Development requires a library or resources and active community of creators, developers, and innovators. This discussion is about how Collaborizm is being used by myDevices and Kandy.io to gather community and develop new IoT solutions. This panel talks about generating ideas and bringing them to market quickly.

10:00-10:50am

Developing an Edge System with Advanced Device Management Capabilities

David Woodard, Eurotech

This presentation will explore how to develop an edge system with advanced device management capabilities. Some management platforms claim to have edge management capabilities, but these solutions based on an agent on a microcontroller cannot offer sophisticated management features. More advanced application development frameworks have a footprint that fits in intelligent edge device controller processors for better device management tools. The Eclipse Kura open source project is becoming popular for early development, with advantages for developing an edge system with device management capabilities that is ready to evolve into production. By integrating software and hardware at the edge and then communicating with the management platform in the cloud through a comprehensive device management tool, devices and their services can be monitored and changed from afar with ease.



Architecture & Security Strategies

Join Cradlepoint, ARM & Intel for a session on architecture & security strategies for the IoT

With all the noise about IoT being used to attack the public Internet with a distributed Denial of Service attack, it's critical for enterprises to build solutions that protect the corporate network inside and out. How do you architect the network to be redundant and secure? How does Fog Computing improve security?

Tuesday, February 9 at 2pm, Grand G (located on the third floor)



cradlepoint

CEO Summit - Room 222



9:00 - 9:05 am

Introductions

Carl Ford, CEO Crossfire Media.

9:05 - 9:10 AM

Survey Discussion

Survey results discussion led by James Brehm of James Brehm and Associates

9:10 - 9:15 PM

Video Insights

Insights by John Feland of Argus Insights.

9:15 - 9:30 am

Mock Company: The Enterprise BIZ@LRGE

Let's talk about integrating IoT in Biz@LRGE, a mythical company. Biz@LRGE has been around for a long time, and while respected for its longevity has not been considered an innovator, due in large part to its legacy systems. Biz@LRGE is a conglomerate with a history of supporting multiple verticals and has a strong history in medical, manufacturing, energy, and oil & gas. The Former CEO wrote the book on Supply Chain in 1972. It is always just short of making the Fortune 500 list.

9:30 - 9:55 am

The Current State of IoT

Hear where IoT is today and the implications for the future. Like the Internet itself the impact is vast, and yet many companies may die trying to ride the wave. What can be done to avoid the pitfalls?

9:55 - 10:40 am

The Enterprise CEO's Dilemma: IT + OT \neq IoT

Knowing the future is one part of the equation, knowing how it impacts your company is a whole other story. This discussion focuses on who the audience is inside your enterprise? Who's the purchaser today? Who is the implementer of the future?

10:40 - 11:25am

The Future of IoT

How should CEO's be thinking about IoT now and 10 years from now? Like Wayne Gretsky the goal for the CEO is to think about where the "puck" is going to be in the future. This is a discussion of what lies ahead. What do you have to invest in and what will be there for your company?

11:25 - 11:35am

How Should CEO's plan for AI Short Term and Long Term?

To stay competitive do you have to reduce your workforce and use AI? Does AI change your need for hands and eyes in the field? Does it impact management staffing?

11:15am - 11:45am

There is a Road Ahead: The Inevitable Bubble & the World Economic Impact.

Hear where IoT is today and the implications for the future. Like the Internet itself the impact is vast, and yet many companies may die trying to ride the wave. What can be done to avoid the pitfalls?

11:45am - 12:00pm

Conclusion

This is a wrap of the conversation with an invitation to continue the dialogue as a community.



Altaworx LTE Internet Failover

Primary & Backup
Connectivity with
Speeds up
to 75 MB



Call us today 866.605.5883

listen | educate | select

altaworx.com



AT&T Partner Exchange®

Platinum Elite Solution Provider



CONNECT. SECURE. MONETIZE.™

The IoT is where you can generate new revenue streams through business model innovation, improve operational excellence, and increase customer intimacy.

- > **Connect:** Gemalto addresses miniaturization needs for OEMs, enables out-of-the-box connectivity for IoT devices, and delivers solutions to manage the network's quality of service.
- > **Secure:** Discover IoT security as an enabler for a robust IoT ecosystem. Gemalto helps customers secure the device, secure the cloud, and manage lifecycle of security for the entire life span of devices.
- > **Monetize:** Gemalto helps customers to enable innovative business models through embedded licensing, and quicker time-to-market with an application enablement platform.

Visit us at booth #2011

Aeris (Booth 3007)
Santa Clara, California 95054
P/F: 888-462-3747 / 408-557-1925
www.aeris.com

Aeris is a pioneer and leader in the market of the Internet of Things – as an operator of end-to-end IoT and machine-to-machine (M2M) services and as a technology provider enabling other operators to build profitable IoT businesses. Among our customers are the most demanding users of IoT services today, including Hyundai, Acura, Rand McNally, Leica, and Sprint. Through our technology platform and dedicated IoT and M2M services, we strive to fundamentally improve their businesses – by dramatically reducing costs, improving operational efficiency, reducing time-to-market, and enabling new revenue streams.

Aizoon USA Inc. (Booth 2003)
415 Lisbon Street
Lewiston, Maine 04240
P: 866-398-6567
www.aizoon.us

Aizoon is an international technology service company that focuses on all facets of IoT, from Smart Factory (Industry 4.0) in discrete and process industries, to Precision Farming and Digital Health, and does so with a big Cybersecurity support. Aizoon comprises researchers, engineers, mathematicians, and software developers who design, develop, and support the software and the systems that create safer, secure networks; smarter factories; well-managed warehouses; and seamless supply chains. Aizoon USA can leverage on sister companies with locations in Italy, the United Kingdom and Australia, enabling a follow the sun 24hrs/day support of customers, wherever they are. Follow us on Twitter: @aizoongroup and LinkedIn. Read more about Aizoon at www.aizoon.us.

Altaworx (Booth 6011)
PO Box 1451
Fairhope, Alabama 36533
P/F: 404-902-5657 / 888-470-7918
http://altaworx.com

Altaworx is an IoT connectivity provider that has been catering to the IoT market since 2015. With reseller relationships through AT&T and Verizon, Altaworx can provide companies with right size data plans for any customers' needs. Having data centers in Atlanta and Dallas, Altaworx currently works with more than 300 clients, ranging from small businesses to municipalities and universities, with a core focus on IoT. Altaworx makes use of the revolutionized and robust technology available, therefore positioning themselves as a strong and sturdy communication bridge for providing mobile data connectivity for embedded devices.

Anritsu Company (Booth 3006)
1155 E. Collins Boulevard, Suite 100
Richardson, Texas 75081
P/F: 800-267-4878 / 972-644-3416
www.anritsu.com/en-US

With 120 years of global communications technology leadership, Anritsu provides the wireless, telecom, RF/microwave and optical industries with top-notch test and measurement instruments, as well as components for R&D, manufacturing, field installation and maintenance. Anritsu's handheld and bench top instruments address the full spectrum of wireless applications.

Arrow Electronics (Booth 4011 IoT Innovation Pavilion)
9201 E. Dry Creek Road
Centennial, Colorado 80112
P: 800-833-3557
www.arrow.com

Arrow Electronics is a global provider of products, services and solutions to industrial and commercial users of electronic components and enterprise computing solutions, with 2015 sales of \$23.28 billion. Arrow serves as a supply channel partner for over 100,000 original equipment manufacturers, contract manufacturers and commercial customers through a global network of more than 460 locations serving over 85 countries

Aware360 (Booth 1003)
611 71 Avenue., SE
Calgary, Alberta T2H 0S7
Canada
P/F: 403-252-5007 / 403-252-5392
www.aware360.com

Aware360 makes people's lives better through early identification and notification of risks and events to a trusted response center – providing peace of mind. Our solutions leverage the personal technology (such as wearables, smartphone apps and satellite devices) to ensure each individual is protected, regardless of their environment. Managers, co-workers, family members and friends can be certain their colleague, friend or family will receive help when needed. Aware360 solutions enable a robust and growing global ecosystem of device manufacturers, Internet of Things (IoT) platform providers and Real Time Response Partners.

Axis Communications (Booth 5024)
300 Apollo Drive
Chelmsford, Massachusetts 01824
P: 978-614-2004
www.axis.com/us/en

Axis offers intelligent security solutions that enable a smarter, safer world. As the global market leader in network video, Axis is driving the industry by continually launching innovative network products based on an open platform - delivering high value to customers through a global partner network. Axis has long-term relationships with partners and provides them with knowledge and ground-breaking network products in existing and new markets.

Azul Systems (Booth 1011)
385 Moffett Park Drive, Suite 115
Sunnyvale, California 94089
P/F: 650-230-6500 / 650-230-6600
www.azul.com

Azul Systems, the industry's only company exclusively focused on Java and the Java Virtual Machine (JVM), builds fully supported, standards-compliant runtimes that help enable Java-based businesses.

Bayshore Networks (Booth 3010)
6903 Rockledge Drive, Suite 910
Bethesda, Maryland 20817
P: 508-942-0099
www.BayshoreNetworks.com

Bayshore Networks® is the cybersecurity leader for the Industrial Internet of Things. The Company's award-winning IT/OT Gateway™ unlocks the power of the Industrial Internet by providing enterprises with unprecedented control and visibility into their Operational Technology infrastructure while safely and securely protecting industrial applications, networks, machines, and workers. For more information, visit www.BayshoreNetworks.com.

beamSmart (Table 8)
8133 Leesburg Pike, Suite 400
Vienna, Virginia 22182
P: 702-533-5886
www.beamsmart.com

BeamLink is a configurable IoT messaging and content sharing platform that connects people, information and machines. It is built on a mobile cloud communication platform using machine learning technology offering low latency and end-to-end encryption

Berkeley Variatronics Systems (Table 19 IoT Innovation Pavilion)
255 Liberty Street
Metuchen, New Jersey 08840
P/F: 732-548-3737 / 732-548-3404
www.bvsystems.com

BVS designs and manufactures wireless IoT and M2M test and security devices for 3G/4G networks used for smart meters, EV charging stations, vending machines, wireless kiosks, digital signage, ATMs and law enforcement around the world.

Tellient

Analytics for Things

The only analytics platform built specifically for the Internet of Things

Tellient's IoT Analytics gives operators and connected device makers the whole story with beautiful graphs for humans and organized data for machines, designed to monetize the data created by the internet of things.



**MEET AT IOT EVOLUTION TO DISCOVER
HOW YOU COULD BE MONETIZING YOUR IOT DATA**

Call or text 858-245-7939 or visit tellient.com/iotevolution17

www.tellient.com/iotevolution17

CENTRI Technology (Booth 2016)
701 5th Avenue, Suite 550
Seattle, Washington 98104
P/F: 206-395-2793 / 206-629-9540
www.centritechnology.com

CENTRI provides advanced security for the Internet of Things. Our technology helps organizations secure what matters most in IoT – their data. CENTRI reduces the risk of data theft and loss of equipment command by establishing trusted devices and advanced encryption technology while retaining complete visibility to all activity. CENTRI maximizes IoT device uptime and protects the data in transit, at rest and on the endpoint.

Cisco (Booth 3016)
www.cisco.com

ClearBlade, Inc. (Booth 1013)
103 E. 5th Street, 2nd Floor
Austin, Texas 78701
P: 512-686-3037
www.clearblade.com

ClearBlade is the enterprise Internet of Things platform to rapidly engineer and run real-time, scalable IoT applications. ClearBlade enables companies to build IoT solutions that make streaming data actionable by combining business rules and machine learning with powerful visualizations and integrations to existing business systems. Built from an enterprise-first perspective, the ClearBlade Platform runs securely in any vendor cloud, on-premise, or in hybrid environments. We bring the full power of the ClearBlade Platform to the edge as an IoT gateway appliance called the ClearBlade EDGE. The ClearBlade EDGE gateway intelligently syncs with the ClearBlade Platform guaranteeing connectivity, execution and speed at the edge. ClearBlade is developer focused with an extensive library of proven and tested pre-built components and integrations. ClearBlade accelerates the time-to-market while significantly reducing the cost and risk of delivering IoT solutions, creating new business models and revenue streams.

Connected Development (Table 9 IoT Innovation Pavilion)
<http://connecteddev.com>

Danlaw Inc. (Table 13 IoT Innovation Pavilion)
41131 Vincent Court
Novi, Michigan 48375
P/F: 248-957-9816 / 248-471-4485
www.danlawinc.com

We are a global leader in connected car and automotive electronics. Our family of 800 people live, breathe, and create innovative tech for some of the world's largest car makers. Thirty years ago, we designed software for the first 8-bit Electronic Engine Control module, and today, we continue to develop forward-looking technologies. We focus our efforts on R&D to stay ahead of rapidly changing industry needs in an increasingly connected world. Danlaw is known for ground-breaking tech, efficient development, and adaptive solutions for dynamic environments. Our world-class connected vehicle solutions make Danlaw one of the largest suppliers of connected gadgets in the world.

DELTA (Booth 2007)
Venlighedsvej 4
Hoersholm, Copenhagen 2970
Denmark
P/F: +45 7219 4000 / +45 7219 4001
<http://asic.madebydelta.com>

Smart, connected products can be anything anywhere. DELTA's focus on specific application areas gives you a safe and fast path to proof-of-concept before investments are made. DELTA's long history of low power applications has led to our focus on battery less transmission. You can transmit data via RFID without a battery – by use of the carrier frequency. Energy harvesting can contribute to reduce power consumption. Our customers have different requirements. We are trained to find the optimal solution by selecting the right mix of on-chip/off-chip components, sensor size, analog amplifiers and digital communication which minimises price, size and power consumption.

Dense Networks (Booth 1004)
PO Box 692461
Orlando, Florida 32869
P: 267-237-5907
www.densenetworks.com

Dense Networks is The Social Think Tank focused on Mobile Bandwidth, IoT and Smart Cities. We produce events and provide consulting services for Network Based solutions.

Digi International (Table 18 IoT Innovation Pavilion)
11001 Bren Road East
Minnetonka, Minnesota 55343
P/F: 952-912-3444 / 952-912-4956
www.digi.com

Digi International (Digi) is a leading global provider of mission-critical and business-critical machine-to-machine (M2M) and Internet of Things (IoT) connectivity products and services. We help our customers create next generation connected products and deploy and manage critical communications infrastructures in demanding environments. Our embedded modules and off-the-shelf routers, gateways and network products are designed for relentless reliability and deliver unquestioned performance and security. Our cloud-based software and professional services help customers put their connected products and assets to work across a broad range of mission-critical industry applications. Founded in 1985, we've helped our customers connect over 100 million things, and growing.

DMI (Booth 4023)
6550 Rock Spring Drive, 7th Floor
Bethesda, Maryland 20817
P: 240-233-4800
<https://dminc.com>

As the world's first end-to-end mobility company, DMI specializes in mobile strategy, UX and app development, Omni-channel commerce, brand and marketing, big data analytics and device and app management. The company's unique, integrated approach to mobility has resulted in dramatic growth as well as an expanding client base including hundreds of Fortune 1000 companies and all fifteen U.S. Federal Departments. DMI is headquartered in Washington DC area, with satellite offices around the world.

Dunn Solutions (Booth 2008)
5550 Touhy Avenue, #400
Skokie, IL 60077
P/F: 847-673-0900 / 847-673-0900
www.dunnnsolutions.com

Dunn Solutions is a digital commerce and business transformation consultancy. Our experts leverage the latest portal, e-commerce, and analytics technologies, including Big Data and IoT solutions, to help companies realize maximum profit from their digital presence. From inception to deployment our consultants work with companies of all sizes to tackle the most advanced business solutions available today, and we have been helping companies achieve their business objectives since 1988. Focused on the business analytics, application development and web/portal spaces, Dunn Solutions Group delivers services worldwide through offices in Chicago, Minneapolis, Raleigh, and Bangalore, India.

Encore Networks (Booth 5017)
3800 Concorde Parkway, Suite #1500
Chantilly, Virginia 20151
P/F: 703-318-4325 / 703-787-4625
www.encorenetworks.com

Encore Networks manufactures rugged and commercial enterprise routers including the industry's first commercial M-Class LTE wireless router, the EN-400™ designed for LTE CAT M networks. Encore routers embed 4G cellular modems and feature IP, SSL, VPN, Firewall, Ethernet Switching, Legacy Copper Line POTS replacement, and serial data to IP interworking. Made in the USA, Encore's BANDIT™ and EN™ routers are purpose built for numerous IoT and M2M applications including payment processing, ATM's, kiosks, sensors, remote monitoring, Digital Signage and SCADA. Encore's enCloud™ Management System enables users to manage, monitor and configure distributed enterprises from a central location through the cloud.



monarch

The World's Most Highly Optimized LTE-M Narrowband Chip



Monarch is the first fully
optimized and purpose-built
LTE Cat M1/NB1 chip for IoT.

stream**LITE**^{LTE}

To learn how you can integrate
Monarch with your IoT application, visit
#LTEforIoT & sequans.com/monarch

Eurotech (Booth 3000)
10260 Old Columbia Road, Suite G
Columbia, Maryland 21046
P/F: 301-490-4007 / 301-490-4582
www.eurotech.com/en

Eurotech is a listed global company (ETH.MI) that designs, delivers and deploys full Internet of Things solutions, including services, software and hardware to leading systems integrators and enterprises large and small, with a focus in transportation, industrial, energy, logistics and medical fields. With Eurotech solutions in place, clients have access to the latest open source and standardized software stacks, flexible and rugged multi-service gateways and sophisticated sensors to bring data, analytics and insights into business operations. Working with world-class ecosystem partners, Eurotech delivers on the promise of the Internet of Things with either architected IoT solutions or best in class building blocks, including device and data management, an IoT connectivity and communication integration platform, high performance computers, intelligent edge devices and sophisticated sensors following business models that fit today's business world.

Gatetel (Table 20 IT Innovation Pavilion)
1100 Quail Street, Suite 203
Newport Beach, California 92660
P/F: 949-335-7262 / 952-658-4349
www.gatetel.com

GateTel Manufacture's Ready Off the shelf and custom and private label, IoT Ready Devices. GateTel provides Custom IoT Development service as well as End-To-End IoT Solutions including optional connectivity and Cloud Services. GateTel devices are ready for rapid IoT development and deployment.

Gemalto (Booth 2011)
4690 Millennium Drive
Belcamp, Maryland 21017
P: 410-931-7500
www.gemalto.com

Gemalto is the global leader in digital security, providing the essential building blocks that are required to create a robust IIoT ecosystem. Bringing a circle of trust to IIoT, Gemalto helps companies focus on 'trusted connectivity', 'solid security' and a 'valuable monetization platform' – all prerequisites of a productive and rewarding IIoT roadmap.

Geotab (Booth 3001)
21-1075 North Service Road West
Oakville, Ontario L6M 2G2
Canada
P: 647-727-4971
www.geotab.com

Turn data into insights with Geotab. Capture rich, second-by-second data on vehicle position, speed, fuel use, idling, and more with Geotab's GPS fleet management solutions. Optimize your fleet with high-performance technology that's scalable, flexible, and customizable for your exact business needs. With more than 900 million points of data collected daily, Geotab delivers accurate intelligence for real results. Leverage Geotab's open platform, Software Development Kit, and APIs to integrate data with other systems for added value. Expand your solution with the extensive ecosystem of mobile apps, add-ons, MyGeotab and add-ins at the Geotab Marketplace.

GetWireless (Booth 6010)
10250 Valley View Road, Suite 139
Eden Prairie, Minnesota 55344
P/F: 952-890-6669 / 952-890-6669
www.getwirelessllc.com

GetWireless is an award-winning Value Added Distributor of M2M and IoT Solutions. Since 2001, GetWireless has been providing B2B product solutions offering landline functionality via cellular networks. Our mission is to be the unmatched experts on the premium products we carry, develop custom solutions for any industry application, and support our partners long before, and long after the sale.

GIGA-TMS INC (Booth 5027)
8F, NO.31, Lane 169, Kang-Ning Street, Hsi-Chih Dist, New Taipei City, Taiwan
New Taipei City, New Taipei City 221
Taiwan
P/F: 886-2-26954214 / 886-2-26954213
www.gigatms.com.tw

Build your IoT world with our RFID solutions! Since 1987, GIGA-TMS has been devoting to design and manufacture RFID Readers including 125KHz, 13.56MHz and UHF and also offer OEM/ODM customized solution for customers. We have also built our own brand name as PROMAG which is combined "pro" for professional and "mag" for magstripe.

Globecomm Systems Inc. (Booth 4022)
45 Oser Avenue
Hauppauge, New York 11788
P/F: 631-231-9800 / 631-231-1557
www.globecomm.com

Globecomm is the leading engineering-driven, global connectivity provider serving media, maritime, enterprise and government markets in over 100 countries. We develop smart connectivity solutions to address customer issues across a broad spectrum of areas, including system design and integration, managed communication services including mobile and IoT, media services and mission critical networks. We are known for our unique ability to provide robust connectivity to the most remote locations under the most treacherous conditions. Globecomm is dedicated to improving communications and leverages its world class, global network to offer end-to-end, managed service communication's solutions worldwide.

iBusiness Magazine (Booth 1012)
8251 Pathfinder Loop, Suite 633
Fort Myers, Florida 33919
P: 416-907-8410
www.ibusinessmag.com

iBusiness Magazine - business innovation solutions - is the distinct choice for business end-users who are using cross platform technologies like Apple, Microsoft & Google. Unlike any other magazine, we focus on providing information around business and enterprise solutions running on mobile & desktop technologies. Our articles take a solutions-based approach to productivity, workflow management and tips & tricks. The magazine articles come from the industry leaders with years of experience and proven track records. For more information visit

Industrial Internet Consortium (Booth 1014)
109 Highland Avenue
Needham, Massachusetts 02494
P/F: 781-444-0404 / 781-444-4864
www.iiconsortium.org

The IIC is a global, member-supported, organization that promotes the accelerated growth of the IIoT. By coordinating ecosystem initiatives to securely connect, control and integrate assets with people, processes and data using common architectures, interoperability and open standards, the IIC delivers transformational business and societal outcomes across industries.

Ingenu (Meeting Room 119)
10301 Meanley Drive
San Diego, California 92131
P/F: 858-201-6000 / 858-201-6000
www.ingenu.com

Ingenu™ is building the Machine Network™, the world's largest IoT network dedicated to LPWA (low-power, wide-area) connectivity for machines. Operating on universal spectrum, the company's RPMA® technology is a proven standard for connecting Internet of Things (IoT) devices around the world, with 38 private networks deployed. The Machine Network will have further reach, global range and longer lasting battery life than any existing network. Ingenu is led by a highly experienced team, including veterans from Verizon, T-Mobile, and Qualcomm. Information about Ingenu can be found at www.ingenu.com, or follow us on Twitter @ingenunetworks.

We've Got You Covered

Senet operates the largest and fastest growing Low Power Wide Area Network in North America, providing low cost, long distance wireless connectivity for IoT applications across all industries



Designed to connect
low-cost, battery-
operated sensors
over long distances

Take immediate
advantage of
existing Senet
network coverage

Standards based
for guaranteed
interoperability

No coverage, no problem -
outdoor deployments
completed in as little
as 60 days and indoor
coverage in weeks or days

LETS CONNECT: www.senetco.com • 603-821-0003 • info@senetco.com

The Senet Foundry offers a suite of LoRaWAN™ IoT development services

Hands-on Labs • LoRaWAN Development Kits • Network Sandbox • Certification Support



THE FOUNDRY
Created and used by IoT development experts

< Contact: foundry@senetco.com >



senet

the sensible network company

1000 Market Street, Portsmouth, NH 03801

© Senet™ Inc. - LoRaWAN is a trademark of Semtech Corporation



InHand Networks (Table 7)
3900 Jermantown Road, Suite 150
Fairfax, Virginia 22030
P: 703-348-2988
www.inhandnetworks.com

InHand Networks is a global leader of Industrial IoT, with a record of tremendous success following groundbreaking innovation since our inception in 2001. InHand serves world-class partners and customers with industrial M2M routers, gateways, industrial Ethernet switches, rugged computers and IoT management platforms. We provide IoT solutions for various vertical markets including Smart Grid, Industrial Automation, Remote Machine Monitoring, Smart Vending, Smart City, Retail and more. Proudly bearing the marks of both Rockwell Automation Encompass Product Partner in Asia-Pacific and Schneider Electric CAPP Technology Partner, InHand Networks defines industrial innovation and reliability.

Intertek (Booth 2000)
545 E Algonquin Road
Arlington Heights, Illinois 60005
P/F: 800-967-5352 / 800-967-5352
www.intertek.com

Intertek is a global leader in Quality and Safety solutions for a diverse range of manufacturers, retailers, service providers, and other organizations around the world. From product safety testing and certification, to performance and compatibility testing, to software and mobile app quality assurance, Intertek's experts add value to clients' brands and give them a competitive edge in the market place. Our smart services testing includes overall quality assurance, usability, security, functionality, language and localization, platform and device compatibility, and more.

Ispirata (Booth 2029)
Via Mose' Bianchi 71
MILANO, Milano 20149
Italy
P/F: +39 0422 162 6628 / +39 0422 162 6628
http://ispirata.com

Ispirata is a Software House dedicated to the development of Open Technologies in the IoT space. Its flagship product, Astarte, features a full-fledged IoT data management platform spanning from an Embedded OS/SDK to a complete Data Center solution.

Janus Remote Communications (Table 10 IoT Pavilion)
2111 Comprehensive Drive
Aurora, Illinois 60505
P/F: 630-499-2121 / 630-851-5040
www.janus-rc.com

Janus Remote communications is a Wireless IoT Enabler that provides state-of-the-art products and services for the worldwide Internet of Things (IoT) marketplace. We offer a complete line of carrier certified hardware and software applications as well as full solutions, including System Architecture, Hardware Design, Firmware Design, Database Design, User Interface Tools, Hardware Manufacturing and Applications Software.

KORE Wireless (Booth 6004)
3700 Mansell Road, Suite 250
Alpharetta, Georgia 30022
P: 877-710-5673
www.koretelematics.com

KORE provides the connectivity and services that make the Internet of Things possible. KORE is the world's largest managed network services provider specializing in Internet of Things (IoT) and Machine to Machine (M2M) markets. KORE provides the critical wireless connectivity empowering application, hardware and wireless operator partners to rapidly bring new IoT and M2M innovations to market, with millions of active on-network units in more than 180 countries. KORE delivers choice, reliability and global native coverage through multi-carrier and Tier 1 carrier cellular and satellite network services – including LTE, GSM and CDMA - as well as advanced applications to easily manage IoT connected devices. KORE's recent acquisition of Wyless makes the company one of the six largest providers of M2M/IoT services globally, inclusive of carriers.

Link Labs (Booth 1003)
130 Holiday Court, Suite 100
Annapolis, Maryland 21401
P/F: 202-742-5887 / 202-742-5887
www.link-labs.com

Based in Annapolis, Maryland, Link Labs is a leading innovator in low-power, wide-area network technologies that power the Internet of Things (IoT). The company was founded in 2014 by a group of veteran engineers from the Johns Hopkins University Applied Physics Lab, who had worked together on a variety of projects for the U.S. Department of Defense, telecommunications industry, and Intelligence Community. Their patented Symphony Link technology platform provides secure connectivity for IoT devices. Link Labs excels in taking a concept from initial hardware design all the way through the delivery of a commercial product and have done so for dozens of enterprises around the world. Link Labs powers a range of IoT applications across many industries, including smart cities, agriculture, building controls, automotive, healthcare, government, defense, retail, and utilities.

Litmus Automation (Booth 2007)
2107 N 1st Street
San Jose, California 95131
P: 416-904-4572
www.litmusautomation.com

Litmus Automation provides an extensive PaaS for companies that are in a rush to embrace the disruptive Internet of Things technology and leverage it for real business challenges. Litmus simplifies the complexity of developing IoT systems and solutions with a secure and scalable middleware cloud platform called Loop. With Loop, companies can securely connect any type of hardware, device, sensor or machine to the Internet and integrate the data being collected to any 3rd party software application or enterprise system (ERP, CRM, Big Data Analytics, Dashboards, etc.) in real-time. Loop also contains an extensive device management suite for deploying and monitoring IoT systems. Litmus Automation focuses on the Automotive and Industrial industries, and counts some large Fortune 500 clients.

NimbeLink (Booth 2006)
3131 Fernbrook Lane N., Suite 100
Plymouth, Minnesota 55447
P: 651-331-9225
http://nimbelink.com

NimbeLink is the innovation leader in embedded cellular technology for today's machine-to-machine and Internet of Things solutions. Our award-winning Skywire™ modems and related software and services enable OEM customers to easily develop end-device certified IoT solutions for faster time to market. For more information, call 1.612.285.3433 or visit www.nimbelink.com.

Numerex Corp. (Booth 4003)
400 Interstate North Parkway, Suite 1350
Atlanta, Georgia 30339
P/F: 800-665-5686 / 770-693-5951
http://numerex.com

Numerex Corp. (NMRX) is a leading provider of managed enterprise solutions enabling the Internet of Things (IoT). The Company's solutions produce new revenue streams or create operating efficiencies for its customers. Numerex provides its technology and services through its integrated platforms, which are generally sold on a subscription basis. The Company offers a portfolio of managed end-to-end IoT solutions including smart devices, network connectivity and service applications capable of addressing the needs of a wide spectrum of vertical markets and industrial customers. The Company's mission is to empower enterprise operations with world-class, managed IoT solutions that are simple, innovative, scalable, and secure. Numerex is ISO 27001 information security-certified, highlighting the Company's focus on data security, service reliability and around-the-clock support of its customers. For additional information, please visit www.numerex.com.

Octo Telematics North America (Booth 2012)
134 Rumford Avenue
Newton, Massachusetts 02466
P/F: 617-916-1080 / 617-467-4527
www.octousa.com

Octo is the number one global provider of telematics and data analytics solutions for the auto insurance industry. Octo is the largest and most experienced insurance telematics company in the world, transforming auto insurance through behavioral, contextual and driving analytics for more than sixty insurance partners.

You're Invited to IoT Evolution Expo's All Conference Party

Thursday, February 9th

THE RITZ CARLTON

1 North Fort Lauderdale Beach Blvd. Fort Lauderdale, 33304



IoT

EVOLUTION EXPO

www.iotevolutionexpo.com

8-10PM

*Featuring **Cocobeans***

The Top Steel Drum Band in North America

Open to All IoT Evolution Participants*
IoT Evolution Expo badge required for entry

****Must bring invite and scanable show badge for admittance.**

Sponsored by

gemalto
security to be free



sennet
the sensible network company



SEQUANS
COMMUNICATIONS

Reality AI (Booth 3031)
157 Columbus Avenue, Floor 4
New York, New York 10023
P: 646-549-8946
www.reality.ai

Reality AI is an entirely new approach to machine learning for sensors and signals. Accelerate Internet-of-Things product development and use advanced AI to enable your sensor-driven devices or apps to know what is happening in the world around them. Analyze vibration and acceleration, sound, image, AC power and many other types of signal data. Deploy your detector or classifier in the cloud, or on your embedded target. Suitable for real-time classifications. Applications range from machine health and monitoring to mobile gaming.

Resolvit (Booth 2010)
4131 Parklake Avenue, Suite 460
Raleigh, North Carolina 27615
P/F: 703-734-3330 / 704-734-3335
www.resolvit.com

Resolvit is a technology and management consulting firm, specializing in IoT Enablement services including IoT strategy, platform integration, application development, and program management. Resolvit also helps customers achieve better business outcomes through data realization, enterprise mobility, and technical content creation. With offices across the US and in Argentina, Resolvit supports industry-leading clients in sectors such as Financial Services, Manufacturing, Retail, Energy, Life Science, and Government.

Rev.io (Booth 6011)
3340 Peachtree Road NE, Suite 2850
Atlanta, Georgia 30326
P: 866-470-5502
<https://home.rev.io>

Rev.io helps Communications and IoT service providers optimize their metered and recurring billing, build positive relationships with customers, avoid revenue leakage and grow their business. Our sophisticated billing-as-a-service (Baas) platform is an all-in-one solution for managing end customers' subscriptions, usage, taxation, billing and payments. To learn more about Rev.io, visit our website or contact us at info@rev.io or call 1-866-470-5502.

RloT (Wireless Research Center of North Carolina)
(Table 14 IoT Innovation Pavilion)
3331 Heritage Trade Drive
Wake Forest, North Carolina 27587
P: 919-435-1051
www.ncriot.org

RloT is the largest IoT community in the USA. The community is approaching 4k members, with local, regional and global corporate support. RloT represents a network of technologists, engineers, business leaders, academics, policy makers, and entrepreneurs, all of whom have a stake in the Internet of Things industry. RloT is helping to define the new economy, built around the explosive growth of IoT.

scriptr.io (Booth 1026)
119 West 24th Street, 4th floor
New York, New York 10011
P/F: 877-767-7587 / 877-767-7587
www.scriptr.io

Scriptr.io enables enterprises to develop and deliver IoT applications with reduced time-to-market and increase cost efficiency. Scriptr.io offers a rapid application development environment on a zero-DevOps platform that enable the development of auto-deployed, scalable and secure IoT Application as micro-services. Scriptr.io solves interoperability issues between enterprise applications and IoT-based service providers by offering a marketplace of pre-built vertical IoT applications and connectors to major IoT and enterprise systems. As a robust, carrier-grade application engine supporting millions of enterprise users and 100+ applications, scriptr.io is a cloud based fully-managed service, located on-premise or at the edge.

Senet (Booth 1006)
1000 Market Street
Portsmouth, New Hampshire 03801
P: 603-821-0003
www.senetco.com

Senet, the first and fastest growing North American provider of public, low-power, wide-area networks (LPWANs) for long range-based (LoRa®-based) Internet of Things (IoT) applications. LPWANs enable value-driven solutions that can unlock immediate ROI by enabling devices to connect over very long ranges (approximately 15 miles) while delivering very long battery power life (approximately 10 years) for an extremely low total cost of ownership. For applications that require low cost, low power, and long range, the secure Senet network has distinct advantages over cellular, Wi-Fi, and other emerging connectivity technologies for the IoT market. For additional information, visit <http://www.senetco.com>

Sprint (Booth 3002, Meeting Room 118)
6200 Sprint Pkwy
Overland Park, KS 66251
P: 877-280-5604
<https://business.sprint.com>

Sprint is a global leader in connecting the Internet of Things (IoT), offering a wide range of solutions to the transportation, service, and insurance industries as well as the ability to design custom IoT solutions. The robust portfolio of fleet, trailer, and asset management tools help companies improve safety, comply with industry regulations, and reduce operating expenses. These connected solutions provide unique insights with near real-time information about the vehicle's engine, location, and behavior of the driver. Giving you a bird's eye view of your valuable assets and how they are performing. Deploying IoT solutions can help your company innovate new capabilities, drive greater efficiencies, and establish competitive advantages. Our portfolio usually solves most business needs but if not, we'll help you build an IoT solution that does. The Sprint IoT Business Unit collaborates with our customers to develop entirely new solutions that are tailored to your specific industry, application and desired go to market business model. What your company will learn about Sprint is we have an open approach to teaming with the IoT ecosystem of providers. For more than 17 years, we have demonstrated our expertise helping companies navigate the complexities of deploying connected solutions on 2G, 3G and 4G networks. The Sprint IoT team can help your business harness the power of connecting people, places, things and devices. To learn more about how we help customers go to www.sprint.com/IoT

Sub U System (Booth 2028)
900 Route 168, Suite C4
Turnersville, New Jersey 08012
P: 856-218-8555
www.subusystems.com

Developer of compact, powerful, scalable, and highly secure IoT IP networking appliances. Our devices outperform well known competitors offerings, while consuming far less power, yet offer the most robust level of security allowed commercially.

Supply & Demand Chain Executive (Booth 1010)
201 N Main Street, Floor 5
Fort Atkinson, Wisconsin 53153
P/F: 925-542-1236 / 920-542-1133
www.sdccxec.com

Supply & Demand Chain Executive – (SDCE) is the executive's user manual for successful supply and demand chain transformation, utilizing hard-hitting analysis, viewpoints and unbiased case studies to steer executives and supply management professionals through the complicated, yet critical, world of supply and demand chain enablement to gain competitive advantage.

Save the Date | July 17-20, 2017



www.iotevolutionexpo.com



CAESARS PALACE
LAS VEGAS



Diamond Sponsor

cradlepoint

Platinum Sponsor

CLEARBLADE™
ENGINEERING THE CONNECTED WORLD

Corporate Sponsor

gemalto
security to be free



Connect with us @IoTevolution | #IoTevolution

Symmetry Electronics (Table 17 IoT Innovation Pavilion)

**5400 West Rosecrans Avenue
Hawthorne, California 90250
P/F: 866-506-8829 / 310-536-6188
www.semiconductorstore.com**

Symmetry Electronics is the leading technical distributor of wireless, cellular, Bluetooth, embedded and video technology. We support our customers with sales and engineering teams and a resourceful e-commerce site. We focus on helping engineers find solutions for their latest wireless, video and IoT designs. We have vast product knowledge to help engineers lower costs and reduce time to market. Founded in 1998, Symmetry is ISO9001:2008 certified with world headquarters in southern California and local field offices across the United States and around the world.

Systech Corporation (Booth 4006)

**10908 Technology Pl
San Diego, CA 92127
P: 800-800-8970
www.systech.com**

Systech Corporation, established in 1981, is an industry leader in Internet of Things (IoT) gateways and software development tools. Systech's award winning hardware and software provide customizable flexibility with immediate, off-the-shelf availability. Hardware flexibility is achieved with modular option cards that may be populated to extend the interface capabilities of the gateway. This includes support for wired and wireless interfaces such as cellular, Wi-Fi, Bluetooth, ZigBee, Z-Wave, serial, analog dial, and GPIO. Software development is streamlined with a beginner-friendly scripting solution that reduces development time from months to minutes. Systech customers realize fast time-to-revenue, which often results in market leading positions. Designed and built for a wide range of secure commercial and industrial applications, Systech's product reliability is unmatched in the industry. Systech brings solutions to a wide variety of IoT markets including retail, financial, building automation, energy management, transportation, and mobile health. See how quickly your IoT solution can be brought to life by visiting www.systech.com.

Systema America (Booth 6005)

**1650 S Amphlett Boulevard, Suite 213
San Mateo, California 94402
P/F: 650-218-0814 / 650-346-9774
www.systema.us**

Systema America, a subsidiary of Systema Group in Japan (First Section of the Tokyo Stock Exchange 2317), is a Silicon Valley based innovative system integrator providing end-to-end IoT solutions. It has extensive customer base and experience in software and hardware services and integration. It also serves as a bridge to Japan market for new technologies and products.

T-Mobile (Table 11 IoT Innovation Pavilion)

**3625 132nd Avenue, SE
Bellevue, Washington 98006
P: 404-966-6601
http://iot.t-mobile.com**

As America's Un-carrier, T-Mobile US, Inc. (NASDAQ: TMUS) is redefining the way consumers and businesses buy wireless services through leading product and service innovation. The Company's advanced nationwide 4G LTE network delivers outstanding wireless experiences to 67.4 million customers who are unwilling to compromise on quality and value. Based in Bellevue, Washington, T-Mobile US provides services through its subsidiaries and operates its flagship brands, T-Mobile and MetroPCS.

Tactical Network Solutions (Booth 2002)

**8825 Stanford Blvd., Suite 308
Columbia, Maryland 21045
P/F: 443-276-6990
www.tacnetsol.com**

Tactical Network Solutions, LLC (TNS) specializes in IoT firmware reverse engineering and exploitation. TNS is the creator of Centrifuge, an automated IoT firmware vulnerability scanner. And TNS has demonstrated proven success working with the world's various intelligence agencies, Siemens, Honeywell, GE, Chrysler and others.

Taoglas USA, Inc. (Table 12 IoT Innovation Pavilion)

**8525 Camino Santa Fe, Suite A & B
San Diego, California 92121
P/F: 858-450-0888 / 858-550-0157
www.taoglas.com**

Headquartered in Ireland and with over 12 years' experience, Taoglas provides advanced antenna products and RF service solutions to the world's leading IoT brands. Shipping millions of antennas yearly, with over 130 employees spread across our operations in Ireland, Germany, Taiwan and USA, our design and support centers are located close to you, wherever you are. These centers have the most up to date test and design equipment. Our multicultural, multi-skilled, vibrant, hardworking team of RF professionals deliver the right solution to solve your antenna and RF challenges.

Telit (Booth 1217)

**3131 RDU Center Drive, Suite 135
Raleigh, North Carolina 27560
P/F: 919-439-7977 / 919-439-7977
www.telit.com**

Combining Telit's broad portfolio of IoT Products and Services with our unmatched IoT expertise and developer resources, we offer end-to-end IoT solution enablement across virtually any market or industry around the world. Working with our extensive ecosystem of blue chip companies, technology partners, system integrators, maker communities and mobile network operators, we enable companies, large and small, with IoT concept ideation, system architecture, prototype development and commercial deployments – resulting in business outcomes that helps companies save money, make money, and improve compliance."

TEOCO Corporation (Table 16 IoT Innovation Pavilion)

**12150 Monument Drive, Suite 400
Fairfax, Virginia 22033
P/F: 240-994-0879 / 703-259-2131
www.teoco.com**

TEOCO operates a state-of-the-art test lab with highly experienced test engineers and lab managers to guide customers through device certification in the quickest and most cost-efficient manner. Our lab follows industry-standard testing methodologies and is an Approved Vendor Lab (AVL) for AT&T 10776 testing. TEOCO's highly respected test services are used by the world's leading device manufacturers. These customers have chosen us as a trusted partner for device testing services. In the past 5 years, our device lab has tested over 900 devices, including phones, tablets, data cards, modules and chipsets from more than 45 manufacturers.

U.S. Cellular (Table 15 IoT Pavilion)

**8410 W Bryn Mawr Avenue, Suite 700
Chicago, Illinois 60631-3486
P/F: 773-399-4920 / 773-399-8936
www.uscellular.com**

U.S. Cellular helps businesses simplify the technology world by recommending right-sized technology solutions for their business so they can achieve their goals. The company has a reliable nationwide network and the latest IOT technology to help businesses be more efficient with their time and money and stay ahead of their competition.

Yokogawa (Booth 4010 IoT Innovation Pavilion)

**9-32, Nakacho 2-chome
Musashino-shi, Tokyo 180-8750
Japan
P/F: (81)-3-3225-5383 / (81)-3-3225-5325
www.yokogawa.com**

Yokogawa's global network of 92 companies spans 59 countries. Founded in 1915, the US\$3.7 billion company engages in cutting-edge research and innovation. Yokogawa is active in the industrial automation and control (IA), test and measurement, and aviation and other businesses segments. The IA segment plays a vital role in a wide range of industries including oil, chemicals, natural gas, power, iron and steel, pulp and paper, pharmaceuticals, and food. For more information about Yokogawa, please visit www.yokogawa.com.



**Develop Expert IoT Security
Without Being an IoT Security Expert**

**Internet of Things
Advanced Security – IoTAS**

**Spend More Time Innovating
and Less Time Securing**

Visit Us at Booth #2016

Free IoTAS Trial:

<https://portal.centritechnology.com/signup>



centritechnology.com



[/centritech](https://twitter.com/centritech)



[/centritechnology](https://facebook.com/centritechnology)



[/company/centri-technology](https://linkedin.com/company/centri-technology)

CENTRI and IoTAS are trademarks of CENTRI Technology Inc. in the U.S.



The People Powering IoT.

Visit Us at Booth #6004



Learn more about our global IoT solutions at
www.korewireless.com