



# The Pro-Tel Group



**PRO-TEL**  
Telecom EF&I Services



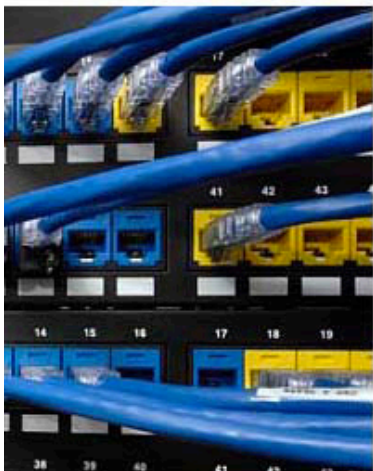
**PRO-TEL**  
MSO Services



**PRO-TEL**  
People



**PRO-TEL**  
Enterprise Services



**PRO-TEL**  
Wireless







# About Us

**Professional Teleconcepts, Inc. (Pro-Tel) is part of Dycom Industries, Inc. an approximately 1.6 billion dollar public company consisting of 44 operating units. Pro-Tel specializes in Inside Plant, Outside Plant and Data Center Engineering and Construction Services.**

- 29 Years of Providing EF&I Services
- TL9000 Certified
- Sarbanes-Oxley Compliant
- Project Management Training
- Full Line of Engineering Products and Services
- Warehousing and Logistical Services
- Union and Non-Union Installation Services
- Visit Pro-Tel's website at [www.pro-tel.com](http://www.pro-tel.com)



## Locations Across the U.S.





# Telco, MSO & Wireless E,F&I Services

Our Engineering and Installation Departments are staffed with highly trained and dedicated professionals equipped to provide the highest quality of Central Office, Headend and Data Center services. Our engineering staff has experience in virtually all disciplines of telecommunications equipment including power, transmission, data, switching, CO and HE infrastructure, collocation and outside plant. Our engineering specifications and drawings can be easily customized to suit your needs and meet all current standards and practices.



## Engineering

- Transport
- Power
- Infrastructure
- Site Survey
- Full CAD Capabilities

## Equipment Installation

- Base Station Infrastructure
- Cable Headend
- Central Office
- MSC/BTS
- Data Center
- Fiber to the X (Home, Cell, Node)
- Cable Head End
- Power Systems

## Project Management

- PMP ® Certified

## Test & Turn-Up

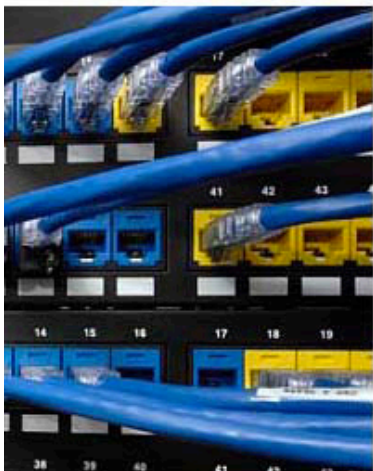
- Acceptance Testing
- Provisioning
- Fiber Characterization
- Local and End-End Testing

## Quality Inspections

- CO Facility
- Installation
- Engineering

## Material Logistics

- Warehousing
- Procurement
- 3<sup>rd</sup> Party Material Logistics



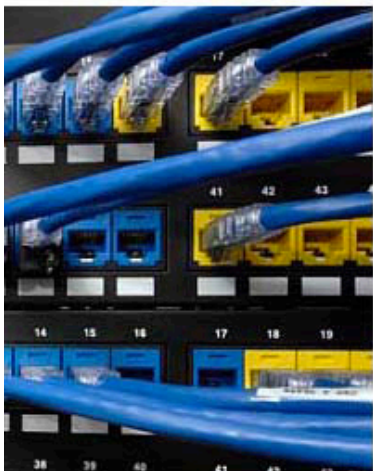


# Wireless Services

We have the ability and experience to implement all areas of your wireless network needs. From search ring candidates to network integration of LTE networks and large scale DAS, Pro-Tel can provide turnkey services or services for a specific phase of a network project. Pro-Tel is dedicated to safety, quality and on-time delivery of your network goals



- A&E services
- Backhaul/circuit provisioning
- MSC EF&I
- Core network (OSS layer)
- Engineering
  - Feasibility studies
  - Needs assessments
  - Documentation and systems integration
- Full telecom infrastructure support
- GSM, CDMA, UMTS, HSPA, LTE
- Indoor DAS, outdoor DAS, DAS and microcells
- LOS services
- Microwave construction and installation
- Site acquisition
- WiMax
- Wireless construction and civil works







# Enterprise Services

Business environments undergo a rapid and constant change – bringing in a need for better IT resources and improved implementation techniques. With these changes comes the need for installing new hardware, moving to better work environments, adding or upgrading existing infrastructure. In short, the need for comprehensive IMAC solutions.

- New onsite equipment installation (Desktop, mobile devices, printers, servers, hubs & routers)
- Disassembly and reconfiguration of IT systems for relocation
- Equipment movement within your building & between your sites
- Rolling out new memory, drives, hardware & software etc.
- Moving into new offices
- Moves, adds and changes to offer remote or on-site administrative support
- Adding fresh units to existing infrastructures
- Technology refresh & upgrades
- Remote configuration of helpline support for technical consulting and implementation
- Recycling IT equipment between projects / departments
- Upgrading equipment with new operating systems, software & hardware etc.
- Diagnostics & configuration





# Staffing Solutions

Regardless of the product or economic climate, focusing on core capabilities is key to business success. While managing human capital and predicting staffing needs have never been more important, these functions can divert attention from your company's fundamental purpose.

Pro-Tel People can help. As a division of Professional Teleconcepts, Inc. "Pro-Tel," our staffing solutions work because we draw on over twenty-eight years of experience in providing staff augmentation to some of the most respected companies in the world.

Whether your company is a large enterprise, a mid-sized company, or a small business, Pro-Tel People can deliver scalable, flexible, and efficient solutions.

- Temporary
- Temporary to Permanent
- Project Based
- Contract
- Professional
- Administrative
- Light Assembly
- General Labor



With so many workforce issues in play, managing the human resources function is challenging for any leadership team. Our range of services can assist you with a good portion of your company's employee-related matters. Your time previously spent finding and prescreening candidates for a management position or training a new payroll administrator can be dedicated to meeting customers' expectations.





# Warehousing and Logistic Services

Pro-Tel can provide dedicated warehouse space, experienced material staff and management and web-based material management visibility.

Our staff has extensive telecommunications background and thus extensive knowledge of the materials we handle.

Pro-Tel maintains a carefully chosen stock of over 120 commonly used items to facilitate shorter lead times.

Pro-Tel has spent years developing an open access project management system, ProTelNet, which give critical access to our customers to view real time development within their own projects.

