

## Company Profile:

Ekinops is a provider of next-generation optical transport solutions for service providers and private networks. Its carrier-grade solutions leverage expertise in 10G transmission, aggregation and Forward Error Correction (FEC) to allow operators to cost-effectively increase data transport capacity over dark fiber, CWDM, DWDM, SONET/SDH, IP and SAN networks.

The Ekinops 360 is a carrier class optical transport platform designed for Metro, Regional and Long haul CWDM and DWDM networks. It can aggregate or transport any Ethernet, Fibre Channel, SONET or SDH client protocol from 100Mb to 10G using advanced Time Division Multiplexing (TDM) solutions. This technology significantly lowers the cost of building and maintaining DWDM and CWDM optical networks by reducing the number of wavelengths in the network.

Ekinops also provides 10G transponders and distance extension solutions for long-haul fiber and Ethernet over SONET/SDH solutions, which enable service providers to transparently interconnect multiple LANs over a SONET or SDH network as they migrate to an all-IP network.

Ekinops' technology can also be found integrated into the products of some of the industry's leading equipment manufacturers. The company takes pride in using its expertise and resources to help its partners develop leading edge solutions while shortening time to market and increasing ROI.

The company is headquartered in Lannion, France, with sales offices in Europe, and the US and a representative office in Singapore.

## Ekinops 360 Features:

- **Programmable Single Chip Transport Technology:** The **T-Chip®** combines capabilities spread across multiple chip sets in most transport systems onto a single programmable chip. This allows Ekinops efficiencies in manufacturing, development of new features, space, power consumption and cost .
- **A True “Pay as you grow” Solution:** Ekinops leads the market in technologies that reduce the number of fibers necessary for transmission and that eliminate the need for intermediate regeneration or amplification points, reducing the overall cost of space, power and fiber.

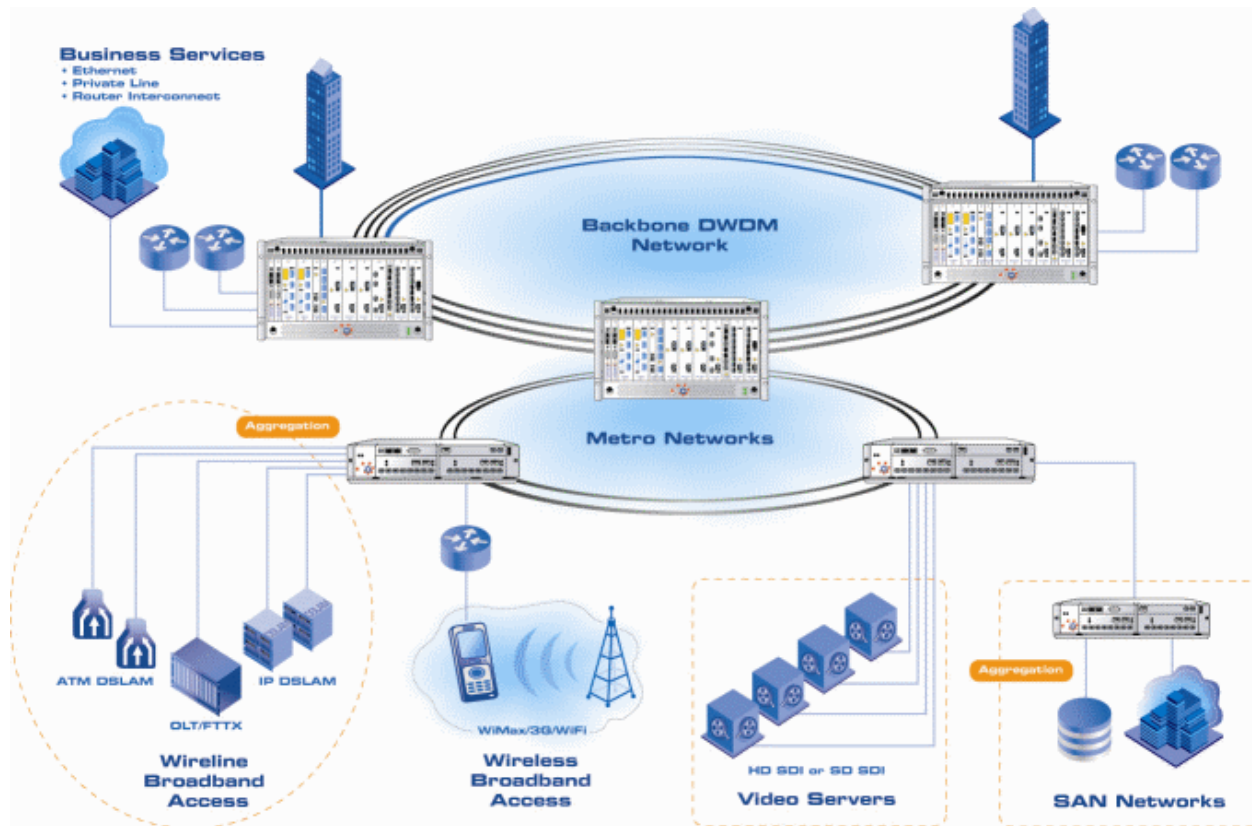
- **Scalability:** Ekinops has developed market leading capabilities that allow for:
  - Scalable ROADM Technology
  - Scalable Amplifier Technology
  - Scalable 10G/40G/100G Technology
- **Market leading technology:** DynaFEC ® state of the art Forward Error Correction that allows the 360 system to go further through the use of software rather than expensive hardware.

## Equipment Overview

The Ekinops 360 Dynamic, Multi-Reach Transport system is a next generation optical transport platform that provides DWDM and CWDM on a single platform that addresses Metro, Regional, and Long Haul applications.



At the heart of the Ekinops 360 system is Ekinops' patented T-Chip® (TRANSPORT ON A CHIP TECHNOLOGY) that enables Fast, Flexible, and Cost effective service delivery. The T-Chip® technology is a programmable device that provides all the capabilities of transport systems on a single chip. Having all capabilities on a single chip provides cost and manufacturing efficiencies providing for fast and cost effective service delivery. The Ekinops 360 platform handles rates from 100Mbps to 40G and can scale to 100G.



The Ekinops 360 platform is NEBS Level 3 compliant, rack-mountable and fully managed. It supports 80 DWDM channels at 10Gbs with 160 and 320 channel options coming soon. In addition, the Ekinops 360 system offers a single fiber option that supports 32 bi-directional channels today with 72 and 144 channel options coming soon. It consists of a 6RU chassis for high density applications and a compact 2RU chassis for low density applications. It is modular and offers unmatched density with support of up to 50G in a 2RU shelf and 190G in a 6RU shelf.

The platform includes optical multiplexers (Mux/DeMux), reconfigurable optical add/drop multiplexers (ROADM) and optical amplifiers (OA). Mux and DeMux filter modules are designed in a modular fashion to accommodate channel growth without service interruption.

The Ekinops 360 supports a wide variety of services today and the T-Chip technology enables it to adapt to meet future service requirements quickly and cost effectively.

## Ekinops Worldwide



### **Ekinops Headquarters**

3, rue Blaise Pascal  
22300 Lannion - France  
Telephone +33 (0) 296 050 030  
Fax +33 (0) 296 486 239

[Contact us](#)



### **Ekinops Americas**

Offices in CA, CT, TX, NJ, FL

Telephone 310 494 0032

[Contact us](#)



### **Ekinops Europe, Middle-East & Africa**

18 Rue Kléber  
92400 Courbevoie - France

Telephone +33 (0) 149 970 404



### **Ekinops Asia Pacific**

Level 42  
Suntec Tower three  
8 Temasek Boulevard  
Singapore 038988  
SINGAPORE

Telephone +65 6829 2156

Fax +33 (0) 149 970 405

[Contact us](#)

Fax +65 6829 2157

[Contact us](#)