

Datasheet

WhatsUp® Gold WhatsConnected™

Innovative Discovery, Inventory and Mapping for physical and virtual infrastructures

WhatsConnected Features

Network Discovery

Using innovative discovery technologies, WhatsConnected locates all the connected devices on the network including those without IP addresses.

VMware Discovery and Classification

WhatsConnected provides discovery and classification of hardware and virtualized machines running VMware using Virtual Infrastructure Management credentials.

Visual Mapping

Based upon discovery, WhatsConnected automatically generates integrated network topology maps showing both Layer 3 addressing and Layer 2 connectivity.

SNMPv3 Discovery

WhatsConnected includes full support of SNMPv3 credentials for device discovery, using the strongest possible authentication and encryption mechanisms in giving access to information.

Inventory and Configuration

WhatsConnected collects and stores comprehensive hardware inventory and configuration information for all networking devices.

WhatsConnected Console

Manage network discovery, create and administer maps, access detailed device inventory and configuration information, and export maps to Visio or WhatsUp Gold from the comprehensive WhatsConnected management console.

User Defined Device Categories

Users have the ability to define, edit, add or delete device categories in WhatsConnected.

Layer 2 Trace

Accessed from either the WhatsConnected or WhatsUp Gold management consoles, the Layer 2 trace feature helps network managers rapidly pinpoint physical layer connectivity issues.

IP/Mac Finder

The IP/Mac Finder tool is a fast and simple way to locate an IP or Mac address on a network from either the WhatsConnected or WhatsUp Gold consoles.

Improve Visibility, Improve Performance

WhatsUp Gold WhatsConnected allows you to completely visualize your physical network topology and understand how all devices on your IT infrastructure are interconnected. Expanding upon the impressive features and functions of the powerful network mapping tool WhatsConnected now offers the ability to automatically discover, document and classify virtual machines on your network running VMware®, using Virtual Infrastructure Management credentials. With a unique combination of discovery technologies, WhatsConnected reveals detailed physical topology maps as well as proprietary device asset and configuration data not found with other network mapping tools.

Understand Your Network

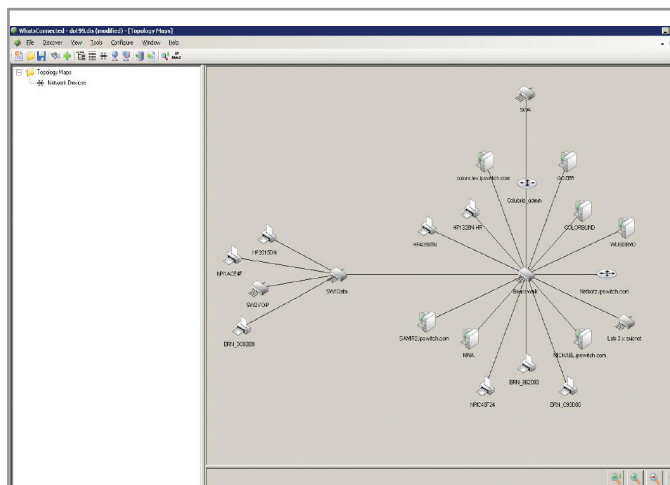
If you can't understand how devices in your network are connected, their interdependencies and where they are located, then locating problems and resolving them before the impact of a failure is noticed is much more difficult than it needs to be. Establishing that device connectivity is not the source of the problems is one of the initial steps to troubleshooting network issues.

Without WhatsConnected, connectivity between devices or systems has to be manually documented by network management personnel, and this process requires significant time and effort to validate and document physical connectivity. WhatsConnected automates this process for you, and now goes a step further to discover and map out your virtual network as well.

The Industry's Most Comprehensive Discovery and Mapping Solution

WhatsUp Gold WhatsConnected moves far beyond typical IP discovery tools by assembling information from every device in the network and providing detailed network maps. You will gain access to critical network information such as physical connectivity, device type, asset/inventory and configuration information, as well as VMware discovery and classification. With the total insight offered by WhatsConnected, you can understand your network from top to bottom and focus on keeping it running securely and at peak performance. The tool's inventory capability provides platform identification and classification for devices from all the most widely deployed network manufacturers, including:

- Cisco/Linksys
- Foundry
- HP Procurve
- Nortel/Bay Networks
- 3COM
- Extreme
- Netgear
- Dell PowerConnect
- DLink
- SMC
- Alcatel
- Allied Telesyn
- VMware



Get complete and accurate topology views of your network.

Total Insight for Top Performance

Unlike manual documentation processes, you can be assured that the connectivity and topology information generated by WhatsConnected is complete and accurate, as it is based on actual device information that the tool gathers. You will fully understand which routers are attached to which switches, and how switches are connected to one another or any other device in your network. When problems occur, you can locate them fast without having to crawl through wiring closets to visually verify connectivity.

Discover: View All Connections and Address Potential Issues

Using a number of innovative discovery technologies, in combination with standards based and proprietary mechanisms, WhatsConnected finds all the connected devices on the network, including those without IP addresses. In addition to using standard Layer 3 discovery mechanisms, including ICMP, SNMP and IP address ranges, WhatsConnected takes it a step further by employing Layer 2 technologies such as Address Resolution Protocol (ARP), Link Layer Discovery Protocol (LLDP) and manufacturer proprietary mechanisms to discover information about devices and their connectivity. In addition to physical infrastructure, WhatsConnected now discovers VMware hosts using Virtual Infrastructure Management (VIM) credentials.

Map: See Your Network in a Whole New Light

Gaining insight into the network and understanding how devices are connected has never been easier. WhatsConnected simplifies the tedious task with auto-generated topology maps that give you full visibility into the physical, logical and virtual connectivity, including IP and VLAN-specific information.

Search: Pinpoint Specific Connections in Seconds

Now you can quickly search and discover how devices are connected – saving precious time and effort in the process. With detailed device views, you can quickly zero in to find out what's connected to what. Additionally with built-in tools such as Layer 2 Trace and IP/MAC Finder, WhatsConnected offers the industry's fastest approach to finding the location and validating connectivity of any device on the network.

Document: Publish Network Views for Insight and Control

With accurate, detailed maps now available through WhatsConnected, you also have the option to publish network maps in Microsoft Visio. Any number of maps or views can be exported helping you view how device additions and design changes have changed your network over time.

WhatsConnected Benefits Summary

WhatsConnected gives you power over your network infrastructure allowing you to:

- **Save time:** Spend time effectively managing your network instead of wasting it on manual documentation of your network topology and networked devices.
- **Stay in control:** Know exactly what devices are on your network, what they are and where they are. Understand device interdependencies and how they are affected by changes and failures.
- **Track changes:** Rapidly pinpoint issues to minimize downtime and gain insight into how your network topology and infrastructure can be configured to minimize potential conflicts and optimize performance.
- **Be the Expert:** With an accurate network topology, including information on attached devices and their exact configuration, inventory and connectivity, you become the ultimate resource for network knowledge and status.

For a free trial of WhatsConnected, please visit:

www.whatsupgold.com/products/download

More information on WhatsConnected is available at:

www.whatsupgold.com/products/whatsconnected

10 Maguire Road
Lexington, MA 02421
(781) 676-5700
USA

Kingsfordweg 151
1043 GR Amsterdam
The Netherlands

Ipswitch Japan 株式会社
〒106-0047
東京都港区南麻布4-11-22
南麻布T&Fビル8階
Japan